



# MEASURING UP

WAKE COUNTY PUBLIC SCHOOLS

EVALUATION AND RESEARCH DEPARTMENT

## 2001-2002 End-of-Grade Multiple-Choice Test Results

July, 2002

*Authors: Chuck Dulaney and Roger Regan*

### Background

Wake County Public School System (WCPSS) students in grades 3 through 8 took the North Carolina End-of-Grade (EOG) multiple-choice tests during the months of May and June. Traditional calendar schools tested the week of May 22-26 and year-round schools tested the week of June 19-23.

The EOG tests have several components including: computer skills, open-ended tests, multiple-choice tests, and the writing assessment. All EOG tests are designed to measure student achievement of the knowledge and skills of the North Carolina Standard Course of Study for students in grades three through eight. The multiple-choice tests are required in reading and math and are optional in social studies and science. During the May/June 2002 administration, WCPSS students took the reading and math multiple-choice tests.

The EOG tests are a vital part of the North Carolina Annual Testing Program. They are the basis for the accountability program referred to as “ABCs”—Accountability, Basics, and Control. The goal of the ABCs is to hold individual schools accountable for student achievement in the basic subjects of reading and math. Under this program, test scores will be the basis for rewards or corrective action for individual schools.

### Districtwide Results

WCPSS EOG multiple-choice results for 2001-2002 show increases at all grade levels in both reading and math. Both the percentage of students scoring at or above grade level and average scale scores reached new highs.

Highlights of achievement include:

- The composite percentage of all grade 3-8 EOG scores at/above grade level rose from 87.5% in 2001 to 89.4% in 2002.
- More than 85% of students met or exceeded grade-level standards in both reading and math at all grade levels except for Grade 6 reading.
- No grade level showed a decrease.

### Achievement Over Time

The percentages of students scoring at or above grade level in reading and math in all grade levels are the highest WCPSS students have ever achieved (see figures 5-8). Average reading and math scale scores also reached new highs in all grade levels (see figures 9 & 10).

### Disaggregated Results

Gains in reading and math were shown by almost all major student groups at all grade levels (see figures 11-12). The largest gains were made by previously lower-performing groups. Among students participating in the free/reduced lunch program, the percentage that met or exceeded grade-level standards rose on average 5.4 points in reading and 6.0 points in math. As a result of these gains, the achievement gap between this group and all other students narrowed considerably in 2002 (see figures 17-18).

## Achievement Level Scores

The achievement level score attempts to categorize student achievement according to four broad levels, defined by the North Carolina Department of Public Instruction (NCDPI) as follows:

### Achievement Levels

**Level I:** Students performing at this level do not have sufficient mastery of knowledge and skills in this subject area to be successful at the next grade level.

**Level II:** Students performing at this level demonstrate inconsistent mastery of knowledge and skills in this subject area, and are minimally prepared to be successful at the next grade level.

**Level III:** Students performing at this level consistently demonstrate mastery of grade level subject matter and skills and are well prepared for the next grade level.

**Level IV:** Students performing at this level consistently perform in a superior manner clearly beyond that required to be proficient at grade level work.

### Distribution of EOG Scores by Achievement Level

An analysis of all grade 3-8 EOG scores by achievement level shows that on each test a majority of students attained a Level 4 (52.8% in reading and 60.5% in math). When these percentages are combined with those for Level 3, the results show that 88.0% of students met or exceeded grade-level standards in reading, and 90.8% in math. (See figure 1 below)

**Figure 1**  
**Distribution of Scores on 2002 EOG Exams**  
**For All Grade 3-8 Students**

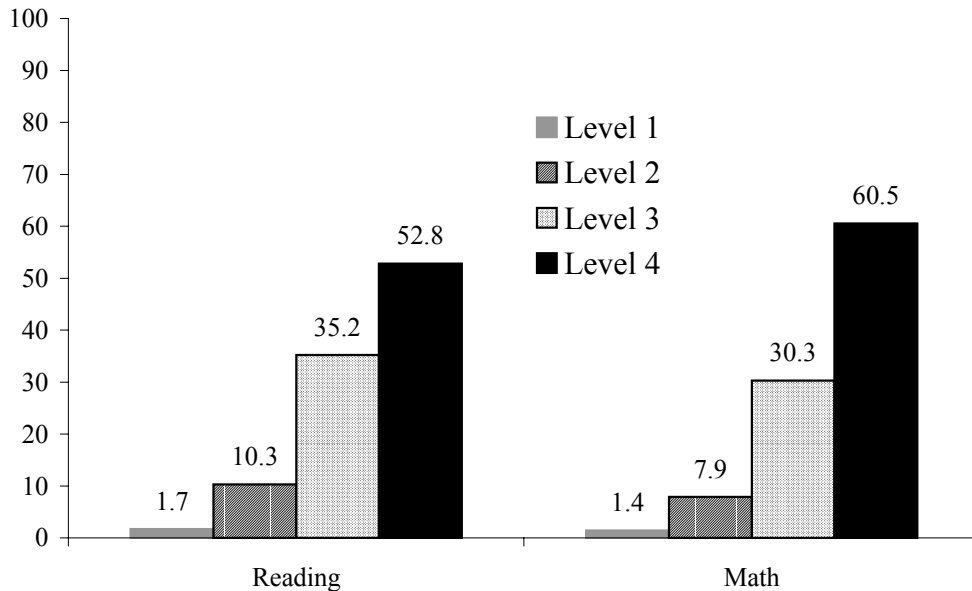
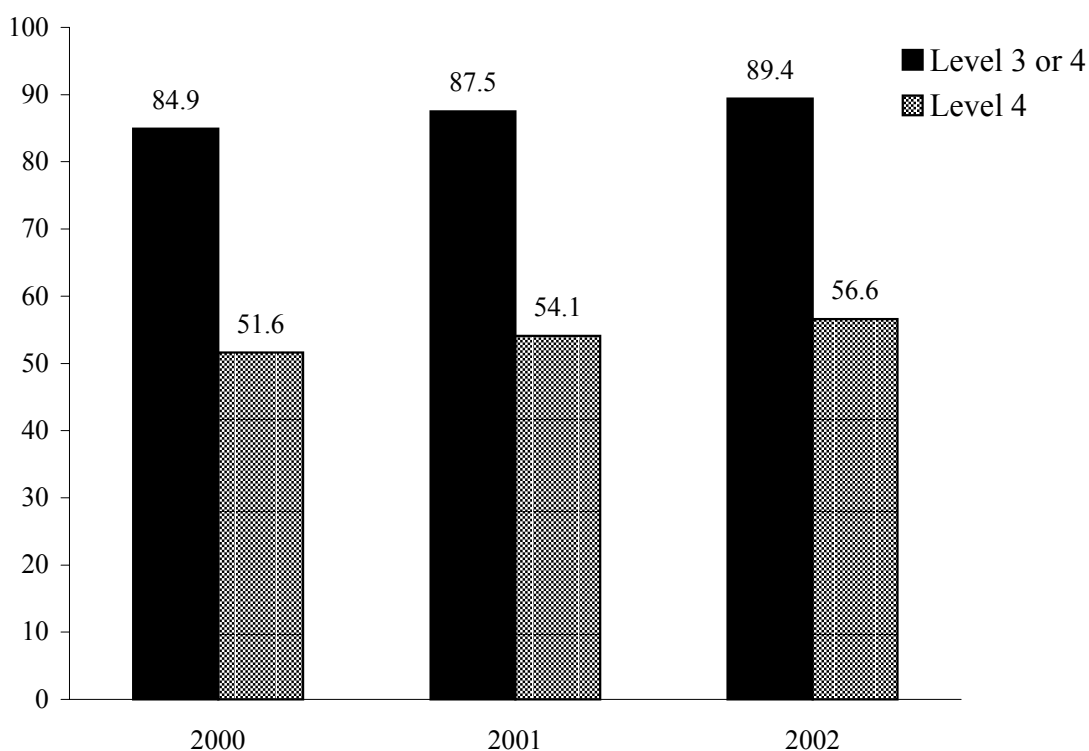


Figure 2 below shows the composite percentages of all grade 3-8 EOG scores meeting or exceeding grade level standards over the past three years. Test scores are calculated separately for each test and then added together to derive these statistics. The composite percentage of Level 3 & 4 scores rose 1.9 percentage points from 87.5% in 2001 to 89.4% in 2002. The proportion of Level 4 scores also increased from 54.1% in 2001 to 56.6% in 2002.

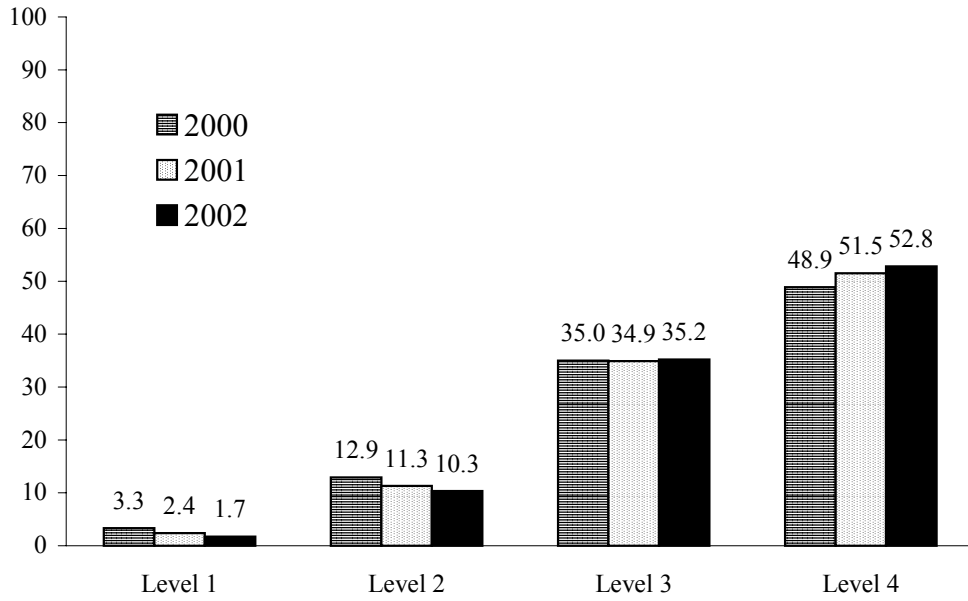
**Figure 2**  
**Composite Percentages of All EOG Scores At/Above Grade Level**  
**Reading and Math, 2000-2002**



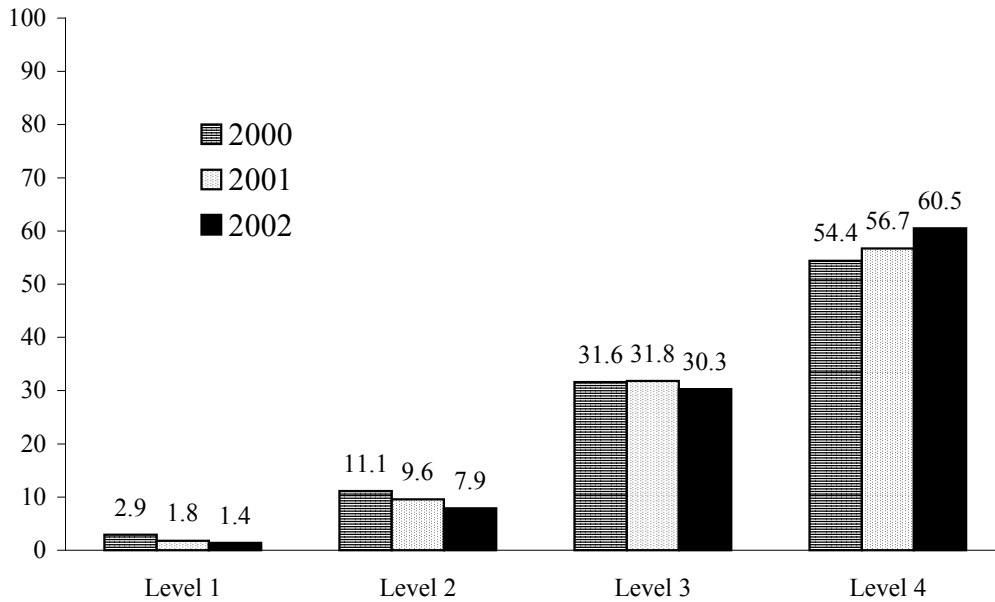
In both reading and math, the overall share of Level 1 and Level 2 scores continued to decline, as more students achieved Level 4 scores. In reading, the combined percentage of Level 1 and 2 scores decreased from 13.7% of the total in 2001 to 12% in 2002. On the other hand, the percentage of Level 3 scores increased from 34.9% in 2001 to 35.2% in 2002, and the percentage of Level 4 scores rose from 51.5% to 52.8% (see figure 3 on next page).

On the math EOG, the proportion of Level 1 and Level 2 scores fell from 11.4% in 2001 to 9.3% in 2002. Level 3 scores also declined slightly (from 31.8% to 30.3%), but the share of Level 4 scores increased from 56.7% in 2001 to 60.5% in 2002 (see figure 4 on next page.)

**Figure 3**  
**Distribution of Scores on Reading EOG for All Grade 3-8 Students**  
**2000-2002**



**Figure 4**  
**Distribution of Scores on Math EOG for All Grade 3-8 Students**  
**2000-2002**



## Achievement Growth Over Time By Grade Level & Cohort

The percentages of students scoring at or above grade level on the 2002 EOG exams are the highest they have ever been for all grade levels in both reading and math (see figures 5 & 6 below). More than 90% of students met or exceeded grade-level standards in reading in grades 5 and 8, and in math in grades 4 through 7. The highest level of achievement was shown in grade 4 math (94.8), while the lowest was seen in grade 6 reading (82.8%). With the exception of grade 6 reading, more than 85% of students scored at or above grade leveling in both reading and math at all grade levels.

One important way of examining test scores is to follow the progress of a cohort of students over time. The shaded and unshaded boxes in the tables below show the scores of cohorts of students. For example, one cohort of students was in 3<sup>rd</sup> grade in 1997 and completed 8th grade in 2002. Over time the percentage of students in that cohort who were in levels III and IV and therefore considered to be “at or above grade level” in reading increased from 75.3% to 91.4%.

**Figure 5**  
**WCPSS Reading Achievement Levels Over Time**  
**Percentage of Students at Levels III and IV (1997-2002)**

<b>Grade</b>	<b>1997</b>	<b>1998</b>	<b>1999</b>	<b>2000</b>	<b>2001</b>	<b>2002</b>
<b>3</b>	<b>75.3</b>	<b>79.3</b>	<b>80.4</b>	<b>83.1</b>	<b>85.3</b>	<b>87.6</b>
<b>4</b>	<b>78.7</b>	<b>80.3</b>	<b>80.8</b>	<b>81.6</b>	<b>85.9</b>	<b>87.4</b>
<b>5</b>	<b>80.3</b>	<b>84.3</b>	<b>84.8</b>	<b>87.7</b>	<b>90.8</b>	<b>92.3</b>
<b>6</b>	<b>77.8</b>	<b>78.8</b>	<b>80.7</b>	<b>77.9</b>	<b>80.7</b>	<b>82.8</b>
<b>7</b>	<b>78.6</b>	<b>80.5</b>	<b>84.9</b>	<b>84.4</b>	<b>85.1</b>	<b>86.7</b>
<b>8</b>	<b>83.3</b>	<b>86.4</b>	<b>87.1</b>	<b>88.7</b>	<b>90.6</b>	<b>91.4</b>

**Figure 6**  
**WCPSS Mathematics Achievement Levels Over Time**  
**Percentage of Students at Levels III and IV (1997-2002)**

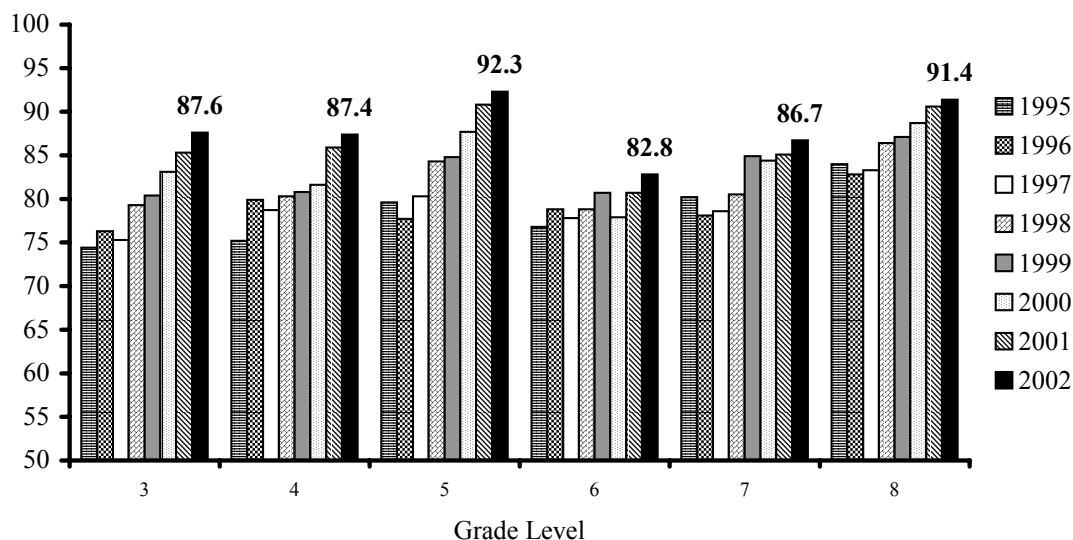
<b>Grade</b>	<b>1997</b>	<b>1998</b>	<b>1999</b>	<b>2000</b>	<b>2001</b>	<b>2002</b>
<b>3</b>	<b>76.8</b>	<b>75.4</b>	<b>77.1</b>	<b>80.0</b>	<b>84.0</b>	<b>87.1</b>
<b>4</b>	<b>83.3</b>	<b>84.1</b>	<b>88.1</b>	<b>89.2</b>	<b>92.7</b>	<b>94.8</b>
<b>5</b>	<b>80.2</b>	<b>84.0</b>	<b>87.0</b>	<b>88.9</b>	<b>92.1</b>	<b>93.8</b>
<b>6</b>	<b>79.7</b>	<b>82.7</b>	<b>84.8</b>	<b>85.3</b>	<b>88.1</b>	<b>90.2</b>
<b>7</b>	<b>81.0</b>	<b>83.7</b>	<b>87.3</b>	<b>86.8</b>	<b>87.6</b>	<b>90.3</b>
<b>8</b>	<b>79.0</b>	<b>83.2</b>	<b>83.8</b>	<b>85.7</b>	<b>86.9</b>	<b>88.3</b>

Math achievement for the cohort of students that was in 3<sup>rd</sup> grade in 1997 and completed 8th grade in 2002 also shows a pattern of improvement over time. The percentage of students in that cohort who were in levels III and IV and therefore considered to be “at or above grade level” in math increased from 76.8% to 88.3%.

## Changes Within Grade Levels Over Time

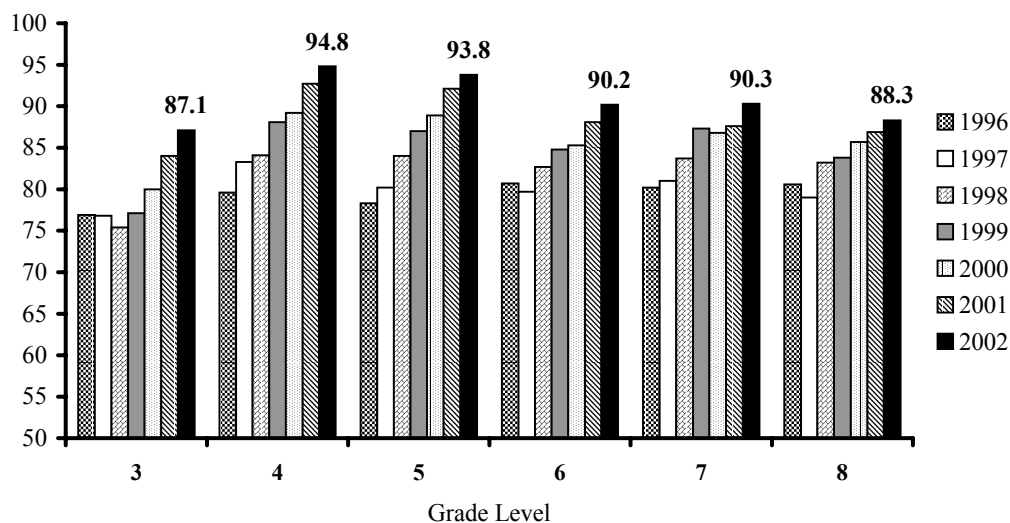
By comparing scores for a grade level to scores achieved in previous years, we see some indication of instructional changes over time, although it must be noted that different groups of students are in each grade level each year. The following graphs (Figures 7 & 8) show changes within each grade level over the past seven years.

**Figure 7**  
**Percent of WCPSS Students in Levels III and IV in Reading**



In reading, grades 3, 4, 5, and 8 have shown steady improvement over the past seven years, while gains in grade 6 and 7 have been less even. In mathematics, steady increases in the percentage of students performing at or above grade level can be seen in all grades levels.

**Figure 8**  
**Percent of WCPSS Students in Levels III and IV in Mathematics**



## Scale Scores

The EOG scale score was developed by staff at the Thurstone Psychometric Laboratory at UNC-Chapel Hill. Scale scores cover the entire span from grade 3 through grade 10, and are designed to show growth over time. The scales were originally designed to begin near 100 and end near 200 with a mean of approximately 150 (anchored at the fifth grade). Mean (average) scale scores for cohorts are expected to increase as students move through grade levels and are an important way to track group changes from year to year. A new math scale was developed by NCDPI and used for reporting results on new math tests implemented in 2000-2001. The new scale range goes from 211 to 310.

As shown in Figures 9 and 10, average reading scores in 2002 were the highest they have ever been at all grade levels. Because the range used for calculating math scores changed in 2001, comparisons to prior years are not valid.

**Figure 9**  
**WCPSS Reading Scale Score Means Over Time**

<b>Grade</b>	<b>1996</b>	<b>1997</b>	<b>1998</b>	<b>1999</b>	<b>2000</b>	<b>2001</b>	<b>2002</b>
<b>3</b>	<b>147.0</b>	<b>146.9</b>	<b>148.2</b>	<b>148.7</b>	<b>149.6</b>	<b>150.2</b>	<b>150.9</b>
<b>4</b>	<b>151.7</b>	<b>151.6</b>	<b>152.4</b>	<b>152.3</b>	<b>152.9</b>	<b>154.1</b>	<b>154.4</b>
<b>5</b>	<b>155.0</b>	<b>155.9</b>	<b>157.2</b>	<b>157.1</b>	<b>158.4</b>	<b>159.0</b>	<b>159.4</b>
<b>6</b>	<b>158.4</b>	<b>158.6</b>	<b>158.5</b>	<b>159.4</b>	<b>158.9</b>	<b>159.8</b>	<b>160.3</b>
<b>7</b>	<b>160.8</b>	<b>161.0</b>	<b>161.7</b>	<b>162.4</b>	<b>162.4</b>	<b>162.7</b>	<b>163.0</b>
<b>8</b>	<b>162.9</b>	<b>163.6</b>	<b>164.4</b>	<b>164.7</b>	<b>165.0</b>	<b>165.8</b>	<b>165.9</b>

**Figure 10**  
**WCPSS Math Scale Score Means Over Time**

<b>Grade</b>	<b>1996</b>	<b>1997</b>	<b>1998</b>	<b>1999</b>	<b>2000</b>	<b>*2001</b>	<b>2002</b>
<b>3</b>	<b>144.7</b>	<b>145.3</b>	<b>144.9</b>	<b>145.3</b>	<b>146.8</b>	<b>253.7</b>	<b>254.6</b>
<b>4</b>	<b>151.4</b>	<b>152.6</b>	<b>154.0</b>	<b>155.0</b>	<b>155.9</b>	<b>259.1</b>	<b>259.9</b>
<b>5</b>	<b>158.2</b>	<b>159.5</b>	<b>160.1</b>	<b>161.9</b>	<b>163.0</b>	<b>263.8</b>	<b>264.9</b>
<b>6</b>	<b>164.9</b>	<b>165.1</b>	<b>166.1</b>	<b>167.1</b>	<b>167.8</b>	<b>266.1</b>	<b>267.1</b>
<b>7</b>	<b>170.7</b>	<b>171.8</b>	<b>172.5</b>	<b>173.7</b>	<b>174.2</b>	<b>270.5</b>	<b>271.8</b>
<b>8</b>	<b>175.5</b>	<b>175.4</b>	<b>177.4</b>	<b>177.5</b>	<b>178.4</b>	<b>273.7</b>	<b>274.6</b>

\* Note: Math scale score ranges were recalculated by NCDPI in 2001. Comparisons to previous years are not valid.

## Disaggregated Results

WCPSS disaggregates results for different groups of students. The most common groupings are based on race, gender, free/reduced lunch program participation, and special education classification. Figures 11 and 12 show 2002 results, and results for prior years are in the appendix. Disaggregated test results by school are included in the annual volume of *School Profiles*.

Almost all major student groups showed gains in both reading and math at all grade levels. The largest gains were made by previously lower-performing groups. Following are summaries of the improvements for these sub-groups of students. Additional analyses of disaggregated data, including progress in closing the achievement gap, are presented on pages 10-16.

***Students Participating in Free/Reduced Lunch Program:*** The percentage of students participating in the free and reduced lunch program that met or exceeded grade level standards rose on average 5.4 percentage points in reading and 6.0 percentage points in math across all grade levels. The largest gains in both subjects were made in grade 7 (a 7.1 percentage point increase in reading and a 7.9 percentage point increase in math). These gains notwithstanding, only grade 4 and grade 5 math had more than 80% of students scoring at or above grade level (85.8% and 82.4%, respectively).

***Special Education Students:*** Similar gains were shown for special education students (excluding academically gifted students). On average, the percentage of special education students scoring at or above grade level increased by 4.7 percentage points in reading and 4.9 percentage points in math. The largest gains were made in grade 3 and grade 4 reading (increases of 7.5 and 6.5 percentage points, respectively). Similar to the group of students participating in the free/reduced lunch program, grade 4 and grade 5 math were the only two grades/subject with more than 80% of students meeting or exceeding grade-level standards (87.0% and 82.8%, respectively).

***Black Students:*** Significant improvements in achievement also are noteworthy when results are disaggregated by race. The percentage of Black students meeting or exceeding grade level standards in reading and math rose at every grade level. The average increase was 4.5 percentage points in reading and 6.0 percentage points in math. Students in grades 3, 4, and 7 showed the largest gains in both subjects. For the first time, the percentage of black students scoring at or above grade level surpassed 80% for several grades, specifically in reading in grade 5 (80.3%), and in math in grade 4 (85.7%) and grade 5 (83.6%).

***Hispanic Students:*** Overall test results for Hispanic students also show improvement over the previous year, but the gains were less consistent by grade than those for black students. The percentage of Hispanic students scoring at or above grade level in reading and math increased at every grade level except grade 8, with an average gain of 2.4 percentage points in reading and 4.0 percentage points in math. More than 80% of Hispanic students met or exceeded grade-level standards in math in grades 4 through 7, including 92.6% in grade 4. However, in reading, only students in grade 5 reached this benchmark (83.3%).

**Figure 11**

<b>2002 End-of-Grade Reading Results For WCPSS (Percentage Of Students Who Scored At Level III And Level IV)</b>						
<b>Category</b>	<b>Gd. 3</b>	<b>Gd. 4</b>	<b>Gd. 5</b>	<b>Gd. 6</b>	<b>Gd. 7</b>	<b>Gd. 8</b>
<b>Total System</b>	<b>87.6</b>	<b>87.4</b>	<b>92.3</b>	<b>82.8</b>	<b>86.7</b>	<b>91.4</b>
<b>Not F/R</b>	<b>93.2</b>	<b>93.6</b>	<b>96.0</b>	<b>90.4</b>	<b>92.0</b>	<b>95.4</b>
<b>F/R Lunch</b>	<b>70.0</b>	<b>67.9</b>	<b>78.8</b>	<b>56.8</b>	<b>65.6</b>	<b>73.2</b>
<b>Male</b>	<b>86.5</b>	<b>86.0</b>	<b>91.7</b>	<b>81.1</b>	<b>85.1</b>	<b>89.9</b>
<b>Female</b>	<b>88.6</b>	<b>88.8</b>	<b>92.8</b>	<b>84.7</b>	<b>88.3</b>	<b>92.9</b>
<b>White</b>	<b>95.1</b>	<b>94.9</b>	<b>97.3</b>	<b>93.2</b>	<b>94.4</b>	<b>96.9</b>
<b>Black</b>	<b>71.2</b>	<b>70.7</b>	<b>80.3</b>	<b>61.3</b>	<b>69.4</b>	<b>79.0</b>
<b>Asian</b>	<b>96.9</b>	<b>97.2</b>	<b>98.0</b>	<b>93.5</b>	<b>94.4</b>	<b>96.3</b>
<b>Hispanic</b>	<b>75.2</b>	<b>73.6</b>	<b>83.3</b>	<b>65.0</b>	<b>70.3</b>	<b>76.9</b>
<b>Am. Indian</b>	<b>85.7</b>	<b>73.7</b>	<b>87.0</b>	<b>69.6</b>	<b>95.7</b>	<b>94.4</b>
<b>Multiracial</b>	<b>91.2</b>	<b>87.7</b>	<b>95.6</b>	<b>82.3</b>	<b>90.4</b>	<b>91.6</b>
<b>Not Spec. Ed</b>	<b>89.6</b>	<b>85.9</b>	<b>92.2</b>	<b>81.5</b>	<b>86.3</b>	<b>92.9</b>
<b>Special Ed.</b>	<b>72.9</b>	<b>70.1</b>	<b>77.6</b>	<b>61.3</b>	<b>64.5</b>	<b>70.4</b>
<b>Acad. Gifted</b>	<b>100</b>	<b>99.8</b>	<b>99.9</b>	<b>99.7</b>	<b>99.9</b>	<b>99.9</b>

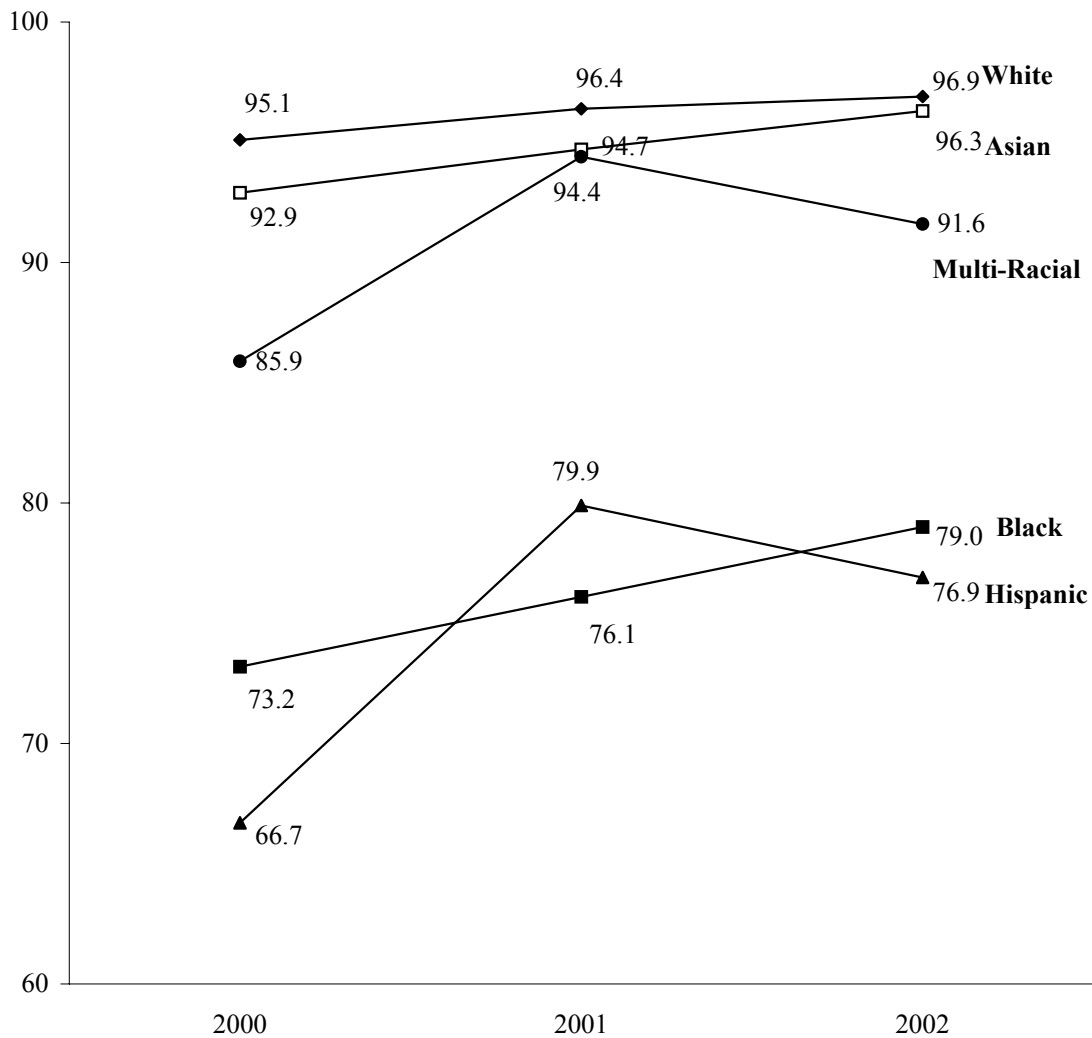
**Figure 12**

<b>2002 End-Of-Grade Mathematics Results For WCPSS (Percentage Of Students Who Scored At Level III And Level IV)</b>						
<b>Category</b>	<b>Gd. 3</b>	<b>Gd. 4</b>	<b>Gd. 5</b>	<b>Gd. 6</b>	<b>Gd. 7</b>	<b>Gd. 8</b>
<b>Total System</b>	<b>87.1</b>	<b>94.8</b>	<b>93.8</b>	<b>90.2</b>	<b>90.3</b>	<b>88.3</b>
<b>Not F/R</b>	<b>93.2</b>	<b>97.6</b>	<b>97.1</b>	<b>95.1</b>	<b>94.5</b>	<b>93.1</b>
<b>F/R Lunch</b>	<b>68.3</b>	<b>85.8</b>	<b>82.4</b>	<b>73.2</b>	<b>73.6</b>	<b>66.8</b>
<b>Male</b>	<b>87.4</b>	<b>94.3</b>	<b>93.7</b>	<b>89.5</b>	<b>89.5</b>	<b>88.2</b>
<b>Female</b>	<b>86.7</b>	<b>95.2</b>	<b>93.9</b>	<b>90.9</b>	<b>91.1</b>	<b>88.5</b>
<b>White</b>	<b>95.5</b>	<b>98.3</b>	<b>98.0</b>	<b>96.6</b>	<b>96.5</b>	<b>95.1</b>
<b>Black</b>	<b>68.5</b>	<b>85.7</b>	<b>83.6</b>	<b>76.0</b>	<b>76.0</b>	<b>71.5</b>
<b>Asian</b>	<b>95.6</b>	<b>98.4</b>	<b>99.7</b>	<b>98.6</b>	<b>97.0</b>	<b>97.4</b>
<b>Hispanic</b>	<b>79.3</b>	<b>92.6</b>	<b>87.4</b>	<b>81.6</b>	<b>80.4</b>	<b>75.9</b>
<b>Am. Indian</b>	<b>81.0</b>	<b>100</b>	<b>91.3</b>	<b>95.7</b>	<b>91.3</b>	<b>94.4</b>
<b>Multiracial</b>	<b>89.4</b>	<b>97.6</b>	<b>95.6</b>	<b>91.1</b>	<b>91.2</b>	<b>92.5</b>
<b>Not Spec. Ed.</b>	<b>88.8</b>	<b>94.2</b>	<b>93.7</b>	<b>90.8</b>	<b>91.1</b>	<b>89.7</b>
<b>Special Ed.</b>	<b>75.1</b>	<b>87.0</b>	<b>82.8</b>	<b>72.2</b>	<b>69.4</b>	<b>62.7</b>
<b>Acad. Gifted</b>	<b>100</b>	<b>99.9</b>	<b>100</b>	<b>100</b>	<b>100</b>	<b>99.9</b>

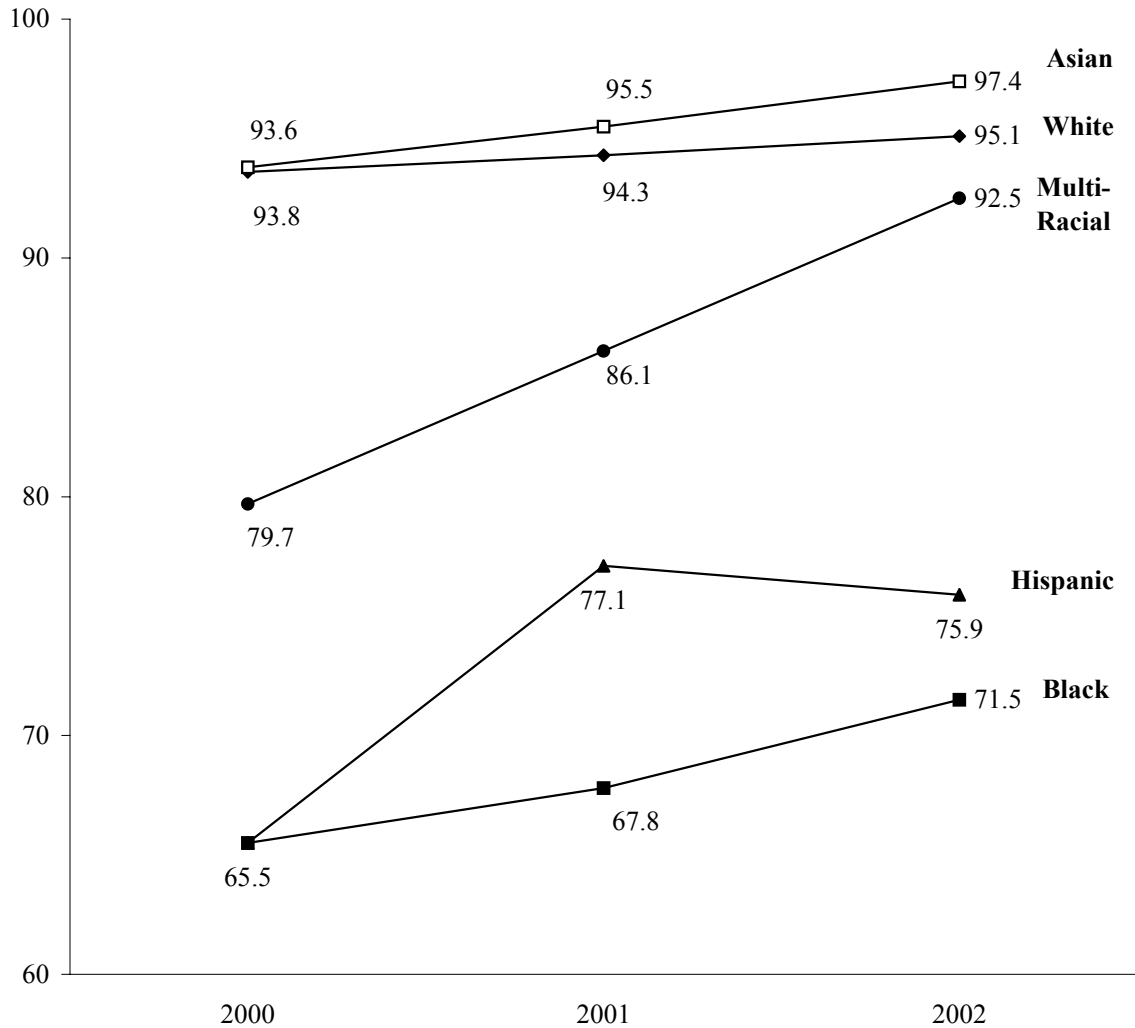
### Grade 8 Results Over Time by Race

Figures 13 and 14 below show the performance of 8<sup>th</sup> grade students from 2000 to 2002 disaggregated by race. Despite several slight declines in 2002, all racial sub-groups have exhibited achievement growth in both reading and math over the three-year period.

**Figure 13**  
**Percent of 8<sup>th</sup>-Grade Students At/Above Grade Level**  
**On Reading EOG by Race 2000-2002**

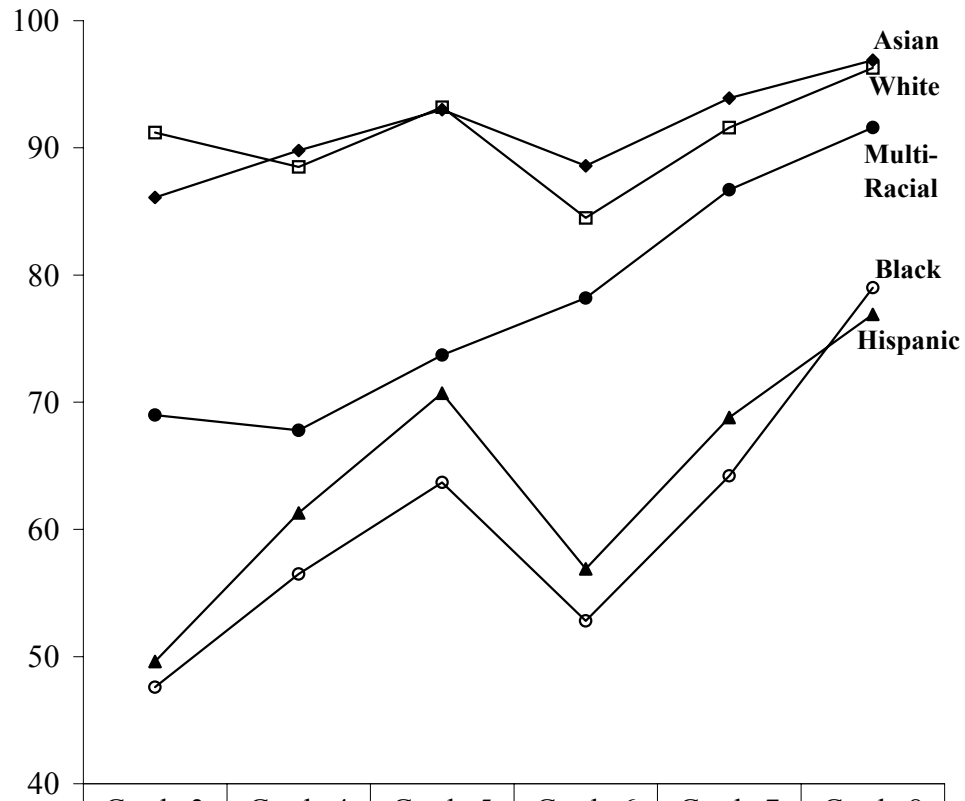


**Figure 14**  
**Percent of 8<sup>th</sup>-Grade Students At/Above Grade Level**  
**On Math EOG by Race 2000-2002**



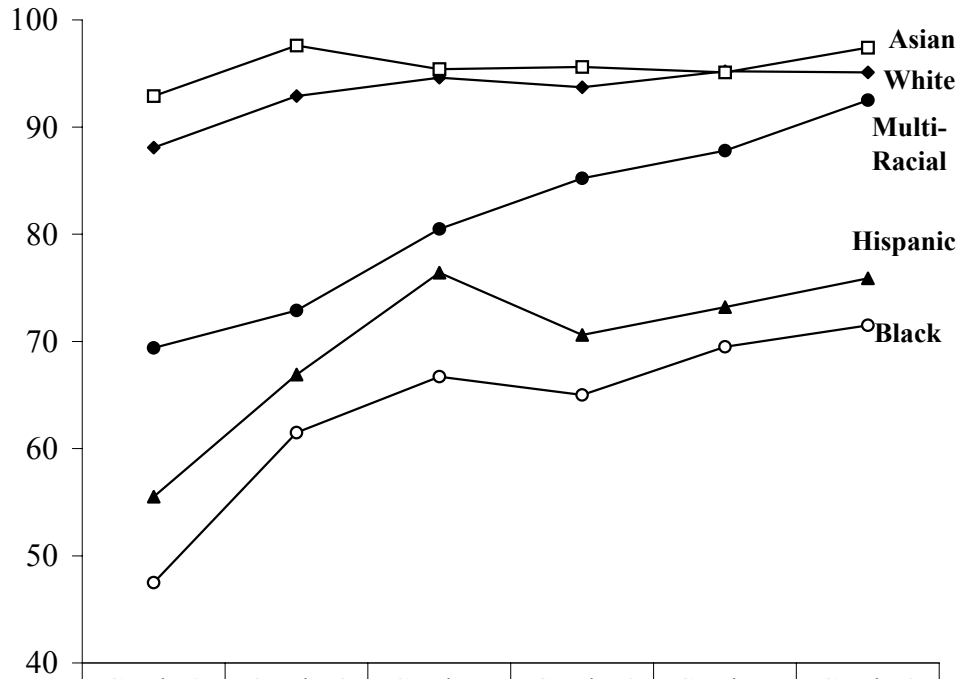
As shown in the preceding graphs and illustrated on the following page, significant gaps persist over time when achievement is disaggregated by race, although the gap sometimes narrows as cohorts progress through the system. Figures 15 and 16 show reading and math performance for the cohort of students completing Grade 8 in 2002 by race across six years, and the gap appears to have narrowed more in 2002 than in prior years.

**Figure 15**  
**Reading Percent At/Above Grade Level by Race**  
**The 2001-2002 8<sup>th</sup>-Grade Cohort Over Time**



	Grade 3 (1997)	Grade 4 (1998)	Grade 5 (1999)	Grade 6 (2000)	Grade 7 (2001)	Grade 8 (2002)
◆ White	86.1	89.8	93.0	88.6	93.9	96.9
▣ Asian	91.2	88.5	93.2	84.5	91.6	96.3
● Multi-Racial	69	67.8	73.7	78.2	86.7	91.6
▲ Hispanic	49.6	61.3	70.7	56.9	68.8	76.9
○ Black	47.6	56.5	63.7	52.8	64.2	79.0

**Figure 16**  
**Math Percent At/Above Grade Level by Race**  
**The 2001-2002 8<sup>th</sup>-Grade Cohort Over Time**

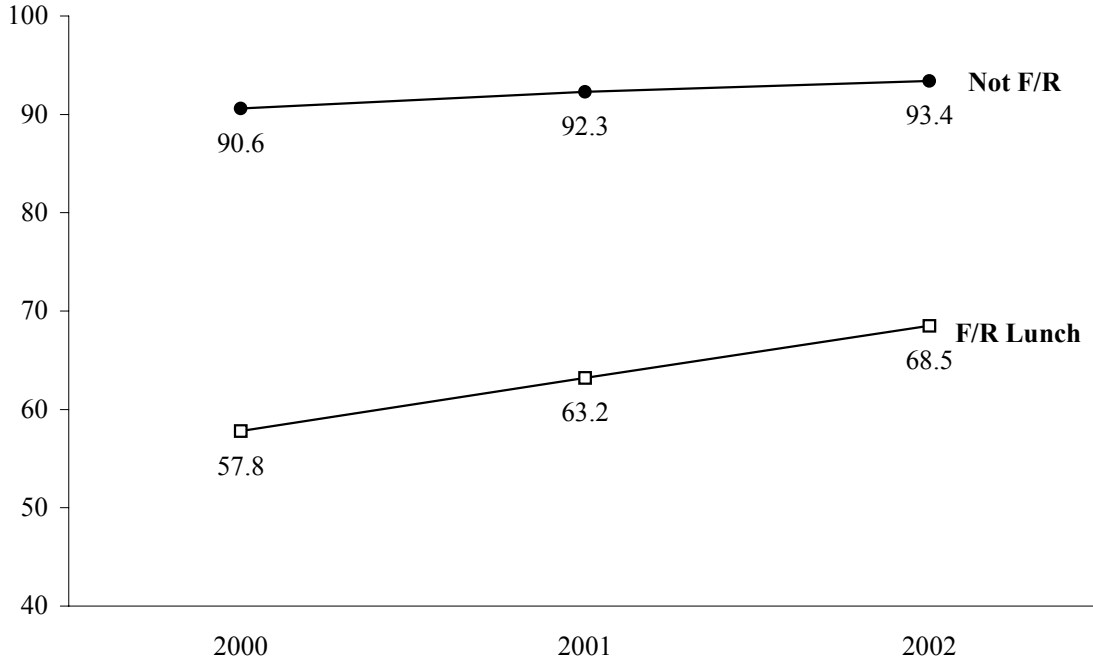


	Grade 3 (1997)	Grade 4 (1998)	Grade 5 (1999)	Grade 6 (2000)	Grade 7 (2001)	Grade 8 (2002)
◆ White	88.1	92.9	94.6	93.7	95.2	95.1
○ Black	47.5	61.5	66.7	65.0	69.5	71.5
▲ Hispanic	55.5	66.9	76.4	70.6	73.2	75.9
□ Asian	92.9	97.6	95.4	95.6	95.1	97.4
● Multi-Racial	69.4	72.9	80.5	85.2	87.8	92.5

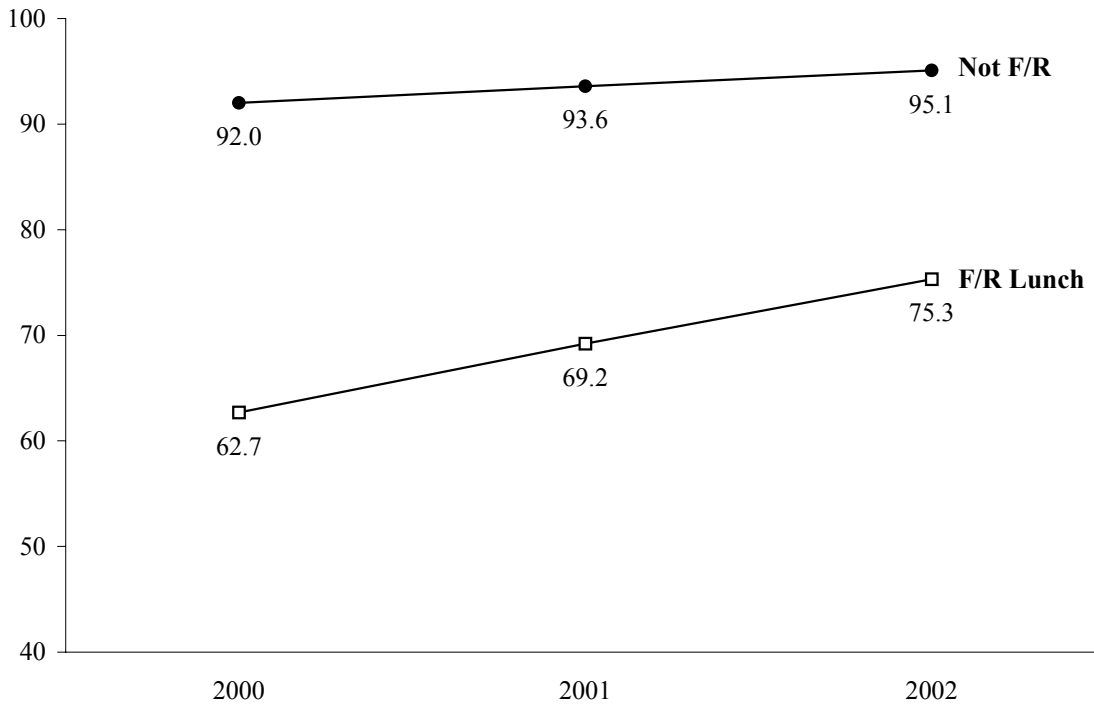
**EOG Results Over Time by Free/Reduced Lunch Participation**

Figures 17 and 18 on the following page show changes in performance for all grade 3-8 students disaggregated by free and reduced lunch program participation. While students receiving free/reduced lunch continue to perform at a lower level than those who do not, the achievement gap between the two groups has narrowed significantly over the past three years. In reading, the difference declined from 32.8 percentage points in 2000 to 24.9 percentage points in 2002, and in math from 29.3 percentage points to 19.8 percentage points.

**Figure 17**  
**Percent of All Grade 3-8 Students At/Above Grade Level on Reading EOG**  
**By Free/Reduced Lunch Program Participation 2000-2002**



**Figure 18**  
**Percent of All Grade 3-8 Students At/Above Grade Level on Math EOG**  
**By Free/Reduced Lunch Program Participation 2000-2002**

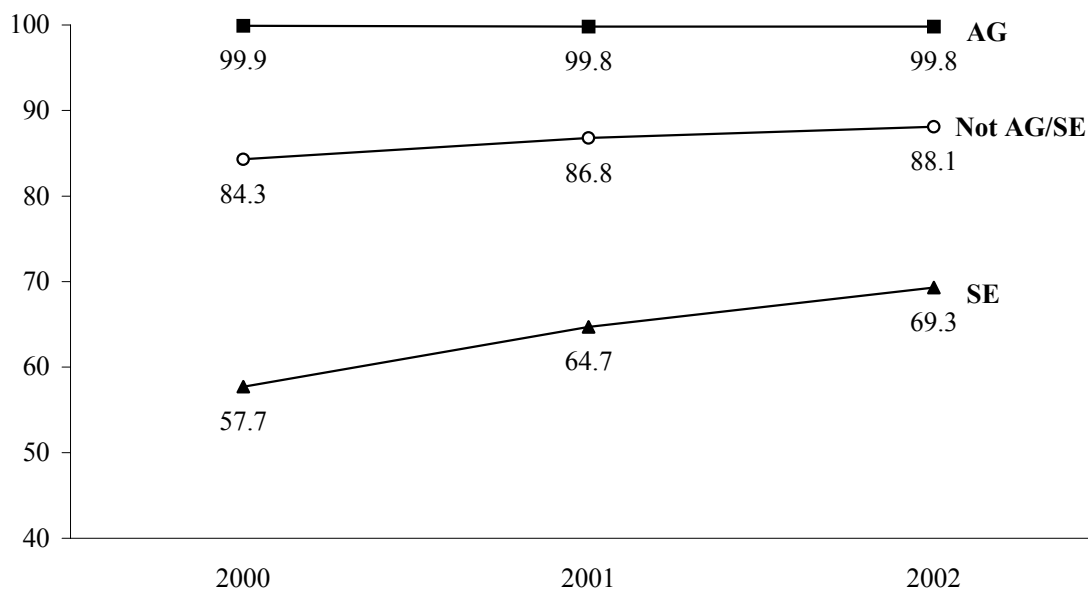


## EOG Results Over Time by Special Education Classification

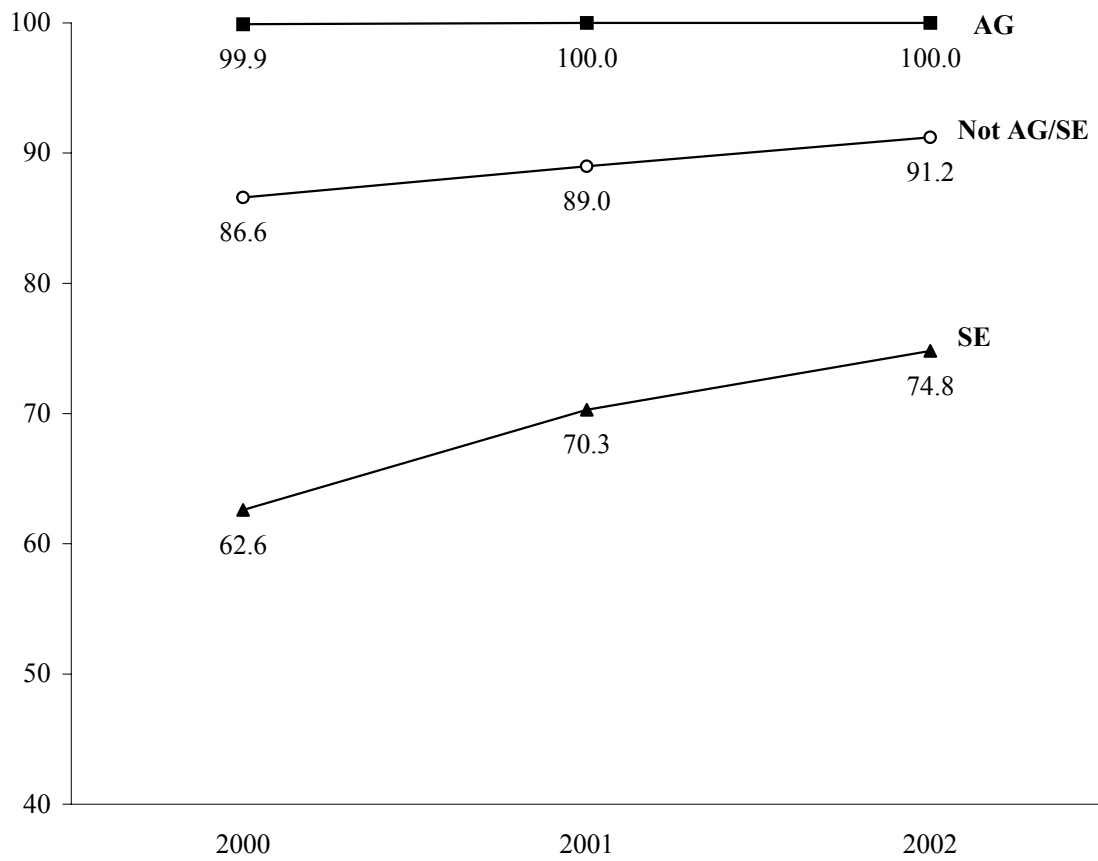
Figures 19 and 20 show 2000-2002 EOG results for all grade 3-8 students disaggregated by special education classification. Academically gifted students have consistently performed at the highest level, with nearly 100% achieving at or above grade level in both reading and math in all three years. The category labeled “Not AG/SE” comprises the majority of students who are neither in academically gifted nor special education programs. Over the past three years, the percentage of these students meeting or exceeding grade-level standards has increased 3.8 percentage points in reading (from 84.3% in 2000 to 88.1% in 2002) and 4.6 percentage points in math (from 86.6% in 2000 to 91.2% in 2002).

While still significantly lower than the other two groups, the performance of special education students has improved substantially since 2000. In reading, the percentage of special education students scoring at or above grade level rose 11.6 percentage points, from 57.7% in 2000 to 69.3% in 2002. In math, it increased 12.2 percentage points, from 62.6% in 2000 to 74.8% in 2002. As a result of these gains, the achievement gap between special education students and other groups as measured by EOG test scores has narrowed considerably. In reading, the aggregate difference between special education students and the “not AG/SE” group decreased from 26.6 percentage points in 2000 to 18.8 percentage points in 2002. In math, the gap declined from 24 percentage points in 2000 to 16.4 percentage points in 2002.

**Figure 19**  
**Percent of All Grade 3-8 Students At/Above Grade Level on Reading EOG**  
**By Special Education Classification 2000-2002**



**Figure 20**  
**Percent of All Grade 3-8 Students At/Above Grade Level on Math EOG**  
**By Special Education Classification 2000-2002**



**Appendix A**

<b>2001 End-of-Grade Reading Results For WCPSS (Percentage Of Students Who Scored At Level III And Level IV)</b>						
<b>Category</b>	<b>Gd. 3</b>	<b>Gd. 4</b>	<b>Gd. 5</b>	<b>Gd. 6</b>	<b>Gd. 7</b>	<b>Gd. 8</b>
<b>Total System</b>	<b>85.3</b>	<b>85.9</b>	<b>90.8</b>	<b>80.7</b>	<b>85.1</b>	<b>90.6</b>
<b>Not F/R</b>	<b>91.8</b>	<b>92.4</b>	<b>95.1</b>	<b>88.6</b>	<b>91.0</b>	<b>95.0</b>
<b>F/R Lunch</b>	<b>64.7</b>	<b>62.9</b>	<b>73.9</b>	<b>51.4</b>	<b>58.5</b>	<b>68.6</b>
<b>Male</b>	<b>83.5</b>	<b>84.5</b>	<b>89.8</b>	<b>78.7</b>	<b>83.7</b>	<b>88.9</b>
<b>Female</b>	<b>87.1</b>	<b>87.3</b>	<b>91.8</b>	<b>82.8</b>	<b>86.5</b>	<b>92.3</b>
<b>White</b>	<b>93.8</b>	<b>94.7</b>	<b>96.7</b>	<b>91.3</b>	<b>93.9</b>	<b>96.4</b>
<b>Black</b>	<b>65.9</b>	<b>65.3</b>	<b>76.9</b>	<b>56.7</b>	<b>64.2</b>	<b>76.1</b>
<b>Asian</b>	<b>94.5</b>	<b>94.2</b>	<b>95.6</b>	<b>94.2</b>	<b>91.6</b>	<b>94.7</b>
<b>Hispanic</b>	<b>74.5</b>	<b>71.7</b>	<b>76.2</b>	<b>59.1</b>	<b>68.8</b>	<b>79.9</b>
<b>Am. Indian</b>	<b>84.2</b>	<b>90.5</b>	<b>77.8</b>	<b>92.3</b>	<b>88.2</b>	<b>95.0</b>
<b>Multiracial</b>	<b>85.6</b>	<b>88.1</b>	<b>93.3</b>	<b>85.7</b>	<b>86.7</b>	<b>94.4</b>
<b>Not Spec. Ed</b>	<b>88.4</b>	<b>84.9</b>	<b>90.7</b>	<b>79.2</b>	<b>85.2</b>	<b>91.8</b>
<b>Special Ed.</b>	<b>65.4</b>	<b>66.6</b>	<b>74.7</b>	<b>54.8</b>	<b>59.7</b>	<b>67.6</b>
<b>Acad. Gifted</b>	<b>100.0</b>	<b>99.7</b>	<b>100.0</b>	<b>99.5</b>	<b>99.9</b>	<b>100.0</b>

<b>2000 End-of-Grade Reading Results For WCPSS (Percentage Of Students Who Scored At Level III And Level IV)</b>						
<b>Category</b>	<b>Gd. 3</b>	<b>Gd. 4</b>	<b>Gd. 5</b>	<b>Gd. 6</b>	<b>Gd. 7</b>	<b>Gd. 8</b>
<b>All Students</b>	<b>83.1</b>	<b>81.6</b>	<b>87.7</b>	<b>77.9</b>	<b>84.4</b>	<b>88.7</b>
<b>Not F/R</b>	<b>90.9</b>	<b>89.2</b>	<b>93.8</b>	<b>85.7</b>	<b>91.0</b>	<b>93.2</b>
<b>F/R Lunch</b>	<b>57.5</b>	<b>54.7</b>	<b>65.0</b>	<b>46.8</b>	<b>57.0</b>	<b>66.6</b>
<b>Male</b>	<b>80.7</b>	<b>79.0</b>	<b>86.1</b>	<b>74.7</b>	<b>81.9</b>	<b>86.4</b>
<b>Female</b>	<b>85.7</b>	<b>84.5</b>	<b>89.4</b>	<b>81.2</b>	<b>87.0</b>	<b>91.3</b>
<b>White</b>	<b>92.6</b>	<b>91.1</b>	<b>95.0</b>	<b>88.6</b>	<b>93.5</b>	<b>95.1</b>
<b>Black</b>	<b>60.4</b>	<b>57.5</b>	<b>68.8</b>	<b>52.8</b>	<b>61.8</b>	<b>73.2</b>
<b>Asian</b>	<b>93.0</b>	<b>92.8</b>	<b>95.3</b>	<b>84.5</b>	<b>92.9</b>	<b>92.9</b>
<b>Hispanic</b>	<b>65.4</b>	<b>68.2</b>	<b>73.4</b>	<b>56.9</b>	<b>70.6</b>	<b>66.7</b>
<b>Am. Indian</b>	<b>84.2</b>	<b>68.0</b>	<b>84.0</b>	<b>83.3</b>	<b>91.3</b>	<b>83.3</b>
<b>Multiracial</b>	<b>84.3</b>	<b>81.2</b>	<b>91.8</b>	<b>78.2</b>	<b>87.7</b>	<b>85.9</b>
<b>Not Spec. Ed</b>	<b>85.8</b>	<b>80.7</b>	<b>87.3</b>	<b>76.6</b>	<b>85.0</b>	<b>90.3</b>
<b>Special Ed.</b>	<b>61.1</b>	<b>57.0</b>	<b>65.8</b>	<b>47.0</b>	<b>55.5</b>	<b>60.9</b>
<b>Acad. Gifted</b>	<b>100.0</b>	<b>99.8</b>	<b>99.9</b>	<b>99.8</b>	<b>99.9</b>	<b>99.9</b>

**2001 End-Of-Grade Mathematics Results For WCPSS  
(Percentage Of Students Who Scored At Level III And Level IV)**

<b>Category</b>	<b>Gd. 3</b>	<b>Gd. 4</b>	<b>Gd. 5</b>	<b>Gd. 6</b>	<b>Gd. 7</b>	<b>Gd. 8</b>
<b>Total System</b>	<b>84.0</b>	<b>92.7</b>	<b>92.1</b>	<b>88.1</b>	<b>87.6</b>	<b>86.9</b>
<b>Not F/R</b>	<b>91.0</b>	<b>96.5</b>	<b>95.7</b>	<b>93.9</b>	<b>92.5</b>	<b>91.7</b>
<b>F/R Lunch</b>	<b>61.9</b>	<b>79.2</b>	<b>77.7</b>	<b>66.6</b>	<b>65.7</b>	<b>63.1</b>
<b>Male</b>	<b>83.5</b>	<b>92.6</b>	<b>91.2</b>	<b>87.8</b>	<b>87.0</b>	<b>85.9</b>
<b>Female</b>	<b>84.5</b>	<b>92.7</b>	<b>92.9</b>	<b>88.5</b>	<b>88.3</b>	<b>87.9</b>
<b>White</b>	<b>94.4</b>	<b>98.0</b>	<b>97.4</b>	<b>95.8</b>	<b>95.2</b>	<b>94.3</b>
<b>Black</b>	<b>60.0</b>	<b>79.1</b>	<b>78.4</b>	<b>70.8</b>	<b>69.5</b>	<b>67.8</b>
<b>Asian</b>	<b>93.9</b>	<b>99.0</b>	<b>98.0</b>	<b>96.9</b>	<b>95.1</b>	<b>95.5</b>
<b>Hispanic</b>	<b>75.3</b>	<b>87.4</b>	<b>85.6</b>	<b>74.5</b>	<b>73.2</b>	<b>77.1</b>
<b>Am. Indian</b>	<b>89.5</b>	<b>95.5</b>	<b>89.3</b>	<b>92.3</b>	<b>100.0</b>	<b>85.0</b>
<b>Multiracial</b>	<b>81.3</b>	<b>93.2</b>	<b>94.8</b>	<b>88.4</b>	<b>87.8</b>	<b>86.1</b>
<b>Not Spec. Ed</b>	<b>86.3</b>	<b>92.3</b>	<b>92.0</b>	<b>88.5</b>	<b>88.1</b>	<b>87.7</b>
<b>Special Ed.</b>	<b>69.5</b>	<b>81.7</b>	<b>78.6</b>	<b>66.3</b>	<b>64.6</b>	<b>59.3</b>
<b>Acad. Gifted</b>	<b>100.0</b>	<b>100.0</b>	<b>100.0</b>	<b>100.0</b>	<b>100.0</b>	<b>99.9</b>

**2000 End-Of-Grade Mathematics Results For WCPSS  
(Percentage Of Students Who Scored At Level III And Level IV)**

<b>Category</b>	<b>Gd. 3</b>	<b>Gd. 4</b>	<b>Gd. 5</b>	<b>Gd. 6</b>	<b>Gd. 7</b>	<b>Gd. 8</b>
<b>Total System</b>	<b>80.0</b>	<b>89.2</b>	<b>88.9</b>	<b>85.4</b>	<b>86.8</b>	<b>85.8</b>
<b>Not F/R</b>	<b>88.4</b>	<b>94.6</b>	<b>94.0</b>	<b>91.6</b>	<b>92.8</b>	<b>90.6</b>
<b>F/R Lunch</b>	<b>52.1</b>	<b>70.3</b>	<b>69.9</b>	<b>60.6</b>	<b>61.8</b>	<b>61.8</b>
<b>Male</b>	<b>79.8</b>	<b>88.9</b>	<b>88.2</b>	<b>83.7</b>	<b>86.1</b>	<b>84.2</b>
<b>Female</b>	<b>80.2</b>	<b>89.6</b>	<b>89.6</b>	<b>87.1</b>	<b>87.6</b>	<b>87.4</b>
<b>White</b>	<b>91.4</b>	<b>95.7</b>	<b>95.4</b>	<b>93.7</b>	<b>94.8</b>	<b>93.6</b>
<b>Black</b>	<b>51.8</b>	<b>72.2</b>	<b>71.8</b>	<b>65.0</b>	<b>66.8</b>	<b>65.5</b>
<b>Asian</b>	<b>94.8</b>	<b>97.1</b>	<b>96.9</b>	<b>95.6</b>	<b>96.0</b>	<b>93.8</b>
<b>Hispanic</b>	<b>65.9</b>	<b>83.7</b>	<b>78.5</b>	<b>70.7</b>	<b>74.4</b>	<b>65.5</b>
<b>Am. Indian</b>	<b>79.0</b>	<b>84.0</b>	<b>84.0</b>	<b>94.4</b>	<b>73.9</b>	<b>75.0</b>
<b>Multiracial</b>	<b>75.2</b>	<b>87.6</b>	<b>88.2</b>	<b>85.2</b>	<b>93.8</b>	<b>79.7</b>
<b>Not Spec. Ed</b>	<b>82.2</b>	<b>89.6</b>	<b>88.4</b>	<b>86.3</b>	<b>88.1</b>	<b>86.7</b>
<b>Special Ed.</b>	<b>61.0</b>	<b>71.6</b>	<b>70.2</b>	<b>57.1</b>	<b>58.7</b>	<b>55.4</b>
<b>Acad. Gifted</b>	<b>100.0</b>	<b>99.8</b>	<b>99.8</b>	<b>99.9</b>	<b>99.9</b>	<b>100.0</b>

**Appendix B: Percent of Students In Levels III and IV on EOG Tests for Three Years**

		Reading			Mathematics		
		2000	2001	2002	2000	2001	2002
304	<b>3rd Gd:</b>	87.8	89.9	93.6	88.8	89.9	93.6
<b>Adams Elementary</b>	<b>4th Gd:</b>	89.5	93.1	86.5	93.4	96.0	95.8
	<b>5th Gd:</b>	94.5	93.2	95.7	95.9	94.5	95.7
308	<b>3rd Gd:</b>	88.5	91.5	94.2	87.9	93.9	95.7
<b>Apex Elementary</b>	<b>4th Gd:</b>	92.8	93.9	95.1	95.3	96.9	97.9
	<b>5th Gd:</b>	88.8	97.8	98.7	92.0	96.8	98.1
320	<b>3rd Gd:</b>	79.5	78.9	96.4	72.2	70.4	94.6
<b>Aversboro Elementary</b>	<b>4th Gd:</b>	60.5	66.7	83.3	79.5	87.7	90.0
	<b>5th Gd:</b>	83.1	74.4	77.8	70.5	78.2	90.1
326	<b>3rd Gd:</b>	90.4	89.0	88.6	84.6	89.0	87.5
<b>Bailevwick Elementary</b>	<b>4th Gd:</b>	84.6	84.2	95.2	89.4	93.7	100.0
	<b>5th Gd:</b>	94.7	93.9	92.6	91.5	92.9	94.7
328	<b>3rd Gd:</b>	95.9	94.1	97.9	90.7	90.4	99.3
<b>Baucom Elementary</b>	<b>4th Gd:</b>	90.9	92.6	94.9	95.7	95.9	100.0
	<b>5th Gd:</b>	92.5	98.6	97.7	95.9	99.3	98.4
334	<b>3rd Gd:</b>	88.3	93.8	100.0	90.3	98.4	98.8
<b>Brassfield Elementary</b>	<b>4th Gd:</b>	87.2	94.7	98.5	96.8	96.1	100.0
	<b>5th Gd:</b>	90.1	98.7	94.3	91.4	98.7	94.3
336	<b>3rd Gd:</b>	73.9	70.6	74.1	70.2	63.5	71.6
<b>Brentwood Elementary</b>	<b>4th Gd:</b>	62.8	70.7	79.0	93.0	77.3	81.5
	<b>5th Gd:</b>	77.5	79.5	87.5	91.5	96.4	93.1
340	<b>3rd Gd:</b>	91.0	91.3	91.3	91.0	85.9	90.0
<b>Briarcliff Elementary</b>	<b>4th Gd:</b>	78.9	91.2	84.5	84.4	94.5	94.0
	<b>5th Gd:</b>	89.8	96.3	91.7	90.8	95.1	94.1
344	<b>3rd Gd:</b>	65.4	77.3	76.8	69.2	69.7	68.1
<b>Brooks Elementary</b>	<b>4th Gd:</b>	62.1	76.8	81.4	68.2	88.4	89.8
	<b>5th Gd:</b>	77.5	91.2	92.9	79.8	91.2	92.9
352	<b>3rd Gd:</b>	85.5	89.9	75.4	80.3	82.6	74.6
<b>Bugg Elementary</b>	<b>4th Gd:</b>	82.5	89.7	84.3	83.8	98.5	90.0
	<b>5th Gd:</b>	82.1	89.0	89.5	78.6	85.4	85.5
362	<b>3rd Gd:</b>	75.5	80.9	66.7	72.8	75.9	62.5
<b>Carver Elementary</b>	<b>4th Gd:</b>	64.6	78.6	69.6	83.9	96.6	86.3
	<b>5th Gd:</b>	77.0	82.4	82.1	80.0	92.6	90.5
364	<b>3rd Gd:</b>	71.5	76.5	88.8	65.9	75.9	90.7
<b>Carv Elementary</b>	<b>4th Gd:</b>	75.7	73.3	79.7	81.8	82.6	97.4
	<b>5th Gd:</b>	79.5	84.5	87.3	87.6	90.6	91.8
376	<b>3rd Gd:</b>	83.3	89.2	94.1	86.3	89.2	92.9
<b>Combs Elementary</b>	<b>4th Gd:</b>	98.6	93.3	98.6	100.0	100.0	98.6
	<b>5th Gd:</b>	90.4	96.3	88.5	91.8	95.0	94.9

**Appendix B: Percent of Students In Levels III and IV on EOG Tests for Three Years**

		Reading			Mathematics		
		2000	2001	2002	2000	2001	2002
380	<b>3rd Gd:</b>	58.5	73.5	80.7	58.5	72.3	76.1
<b>Conn Elementary</b>	<b>4th Gd:</b>	78.9	64.6	76.7	78.9	84.8	87.7
	<b>5th Gd:</b>	78.3	85.9	77.3	85.5	90.2	86.7
384	<b>3rd Gd:</b>	51.1	84.2	82.2	41.5	75.0	78.9
<b>Creech Road Elementary</b>	<b>4th Gd:</b>	57.3	82.2	63.9	77.6	90.5	96.3
	<b>5th Gd:</b>	71.7	85.2	73.5	75.0	76.5	81.9
390	<b>3rd Gd:</b>	98.3	96.5	98.7	97.1	97.0	97.5
<b>Davis Drive Elementary</b>	<b>4th Gd:</b>	97.6	97.7	96.6	98.8	100.0	98.9
	<b>5th Gd:</b>	98.2	98.8	99.5	100.0	98.8	100.0
393	<b>3rd Gd:</b>	81.8	88.1	92.9	76.9	89.0	90.9
<b>Dillard Dr. Elementary</b>	<b>4th Gd:</b>	84.1	88.7	91.5	92.1	94.9	95.7
	<b>5th Gd:</b>	87.6	89.1	85.9	87.6	90.1	84.9
396	<b>3rd Gd:</b>	77.0	79.4	79.4	55.4	76.2	80.9
<b>Douglas Elementary</b>	<b>4th Gd:</b>	86.2	86.7	90.8	91.2	88.0	98.5
	<b>5th Gd:</b>	86.2	88.7	90.5	83.3	87.3	89.2
398	<b>3rd Gd:</b>	88.6	93.1	93.1	83.7	96.9	93.7
<b>Durant Road Elementary</b>	<b>4th Gd:</b>	94.0	92.2	95.1	98.2	95.2	97.8
	<b>5th Gd:</b>	97.6	97.6	93.6	96.5	98.8	95.4
414	<b>3rd Gd:</b>	78.8	84.4	88.2	72.0	85.6	90.2
<b>Farmington Woods Elementa</b>	<b>4th Gd:</b>	79.7	85.4	85.5	85.8	92.3	94.6
	<b>5th Gd:</b>	83.3	88.5	91.3	79.0	91.2	93.6
415	<b>3rd Gd:</b>	82.7	89.7	80.7	70.3	79.5	82.8
<b>Fox Road Elementary</b>	<b>4th Gd:</b>	82.4	86.2	93.0	84.9	94.3	98.4
	<b>5th Gd:</b>	88.6	91.9	90.7	85.9	91.1	89.3
416	<b>3rd Gd:</b>	79.7	82.4	87.3	72.5	76.5	79.0
<b>Fuller Elementary</b>	<b>4th Gd:</b>	73.5	88.4	86.7	77.4	87.0	91.7
	<b>5th Gd:</b>	75.0	85.1	94.1	73.8	73.8	92.8
420	<b>3rd Gd:</b>	74.8	78.7	83.7	73.3	83.7	87.7
<b>Fuquay-Varina Elementary</b>	<b>4th Gd:</b>	63.5	83.9	82.2	75.9	94.7	89.9
	<b>5th Gd:</b>	77.9	83.7	84.7	85.0	85.1	90.4
439	<b>3rd Gd:</b>		94.3	99.1		97.1	98.1
<b>Green Hope Elementary</b>	<b>4th Gd:</b>		99.0	97.9		99.0	100.0
	<b>5th Gd:</b>		98.3	99.1		100.0	100.0
440	<b>3rd Gd:</b>	91.4	90.0	95.3	87.6	94.2	92.9
<b>Green Elementary</b>	<b>4th Gd:</b>	83.6	91.6	92.9	93.8	96.2	97.3
	<b>5th Gd:</b>	91.5	90.1	96.8	93.1	95.4	96.8
442	<b>3rd Gd:</b>	88.4	90.9	87.9	82.6	90.9	87.1
<b>Hilburn Drive Elementary</b>	<b>4th Gd:</b>	76.7	84.6	89.9	84.4	90.6	92.1
	<b>5th Gd:</b>	88.8	92.0	97.4	88.8	94.3	99.1

**Appendix B: Percent of Students In Levels III and IV on EOG Tests for Three Years**

		Reading			Mathematics		
		2000	2001	2002	2000	2001	2002
446	<b>3rd Gd:</b>	66.7	77.2	82.4	62.2	72.0	84.6
<b>Hodge Road Elementary</b>	<b>4th Gd:</b>	66.0	75.7	82.0	82.0	85.2	98.4
	<b>5th Gd:</b>	77.8	85.6	92.2	77.1	84.0	87.4
447	<b>3rd Gd:</b>	76.2	82.8	85.7	78.5	83.0	90.8
<b>Holly Springs Elementary</b>	<b>4th Gd:</b>	83.3	85.4	83.2	92.4	93.5	97.0
	<b>5th Gd:</b>	85.0	90.2	91.6	94.0	92.2	95.1
448	<b>3rd Gd:</b>	89.3	82.9	77.6	85.1	85.6	78.6
<b>Hunter Elementary</b>	<b>4th Gd:</b>	82.1	81.6	90.1	85.4	90.3	95.5
	<b>5th Gd:</b>	92.4	93.3	89.4	91.6	90.8	94.3
452	<b>3rd Gd:</b>	86.5	83.7	85.7	85.6	80.6	92.9
<b>Jeffreys Grove Elementary</b>	<b>4th Gd:</b>	85.7	88.5	82.1	90.1	96.2	96.4
	<b>5th Gd:</b>	85.4	87.9	93.1	84.5	90.1	98.0
454	<b>3rd Gd:</b>	90.3	88.7	93.2	89.7	87.9	92.6
<b>Jones Dairv Elementary</b>	<b>4th Gd:</b>	85.1	92.3	89.7	92.6	94.9	98.7
	<b>5th Gd:</b>	94.3	91.0	93.2	95.3	95.9	98.1
456	<b>3rd Gd:</b>	78.7	82.6	79.6	73.7	78.2	70.4
<b>Jovner Elementary</b>	<b>4th Gd:</b>	74.5	82.4	79.0	83.3	85.1	82.7
	<b>5th Gd:</b>	89.1	86.4	82.2	87.3	87.5	82.2
460	<b>3rd Gd:</b>	96.4	93.2	93.8	100.0	95.5	93.8
<b>Kingswood Elementary</b>	<b>4th Gd:</b>	92.4	92.6	87.5	98.5	100.0	97.9
	<b>5th Gd:</b>	98.5	98.1	100.0	100.0	100.0	100.0
464	<b>3rd Gd:</b>	63.4	79.1	65.7	57.1	70.4	67.7
<b>Knightdale Elementary</b>	<b>4th Gd:</b>	78.6	73.0	69.8	79.7	86.5	88.9
	<b>5th Gd:</b>	73.7	87.4	80.0	65.7	88.2	83.2
468	<b>3rd Gd:</b>	80.6	79.1	85.0	72.5	91.9	90.0
<b>Lacv Elementary</b>	<b>4th Gd:</b>	85.7	81.1	94.9	87.9	88.4	97.5
	<b>5th Gd:</b>	87.1	94.0	94.1	85.1	98.8	97.6
469	<b>3rd Gd:</b>	77.6	94.7	93.1	77.6	91.5	97.4
<b>Leesville Road Elementary</b>	<b>4th Gd:</b>	90.7	92.5	96.3	97.3	97.0	97.2
	<b>5th Gd:</b>	91.5	99.0	96.4	91.5	96.9	96.5
470	<b>3rd Gd:</b>	89.2	83.8	83.3	87.8	82.1	83.3
<b>Lead Mine Elementary</b>	<b>4th Gd:</b>	84.3	86.4	88.4	89.8	90.0	95.8
	<b>5th Gd:</b>	89.1	91.4	98.0	91.4	95.1	96.9
476	<b>3rd Gd:</b>	72.9	80.3	93.0	75.9	82.7	92.0
<b>Lincoln Heights Elementary</b>	<b>4th Gd:</b>	69.0	92.9	82.3	74.5	93.0	88.7
	<b>5th Gd:</b>	81.7	85.1	95.5	75.3	88.8	89.6
480	<b>3rd Gd:</b>	75.5	87.6	92.7	77.8	81.7	93.8
<b>Lockhart Elementary</b>	<b>4th Gd:</b>	79.8	89.6	93.1	89.4	97.0	98.0
	<b>5th Gd:</b>	86.9	95.3	96.9	83.5	89.7	95.0

**Appendix B: Percent of Students In Levels III and IV on EOG Tests for Three Years**

		Reading			Mathematics		
		2000	2001	2002	2000	2001	2002
488	<b>3rd Gd:</b>	76.3	84.8	85.0	75.8	73.9	76.5
<b>Lvnn Road Elementary</b>	<b>4th Gd:</b>	78.4	84.9	76.3	89.7	90.9	88.2
	<b>5th Gd:</b>	79.8	84.8	87.1	78.0	88.2	87.1
	<hr/>						
494	<b>3rd Gd:</b>		79.5	89.7		72.6	89.9
<b>Middle Creek Elementary</b>	<b>4th Gd:</b>		78.1	85.5		89.0	88.2
	<b>5th Gd:</b>		82.8	89.9		89.1	97.1
	<hr/>						
496	<b>3rd Gd:</b>	73.5	81.8	66.7	68.7	71.3	67.0
<b>Millbrook Elementary</b>	<b>4th Gd:</b>	79.7	74.7	78.9	87.0	81.3	86.8
	<b>5th Gd:</b>	81.7	91.4	91.8	89.2	88.9	85.2
	<hr/>						
504	<b>3rd Gd:</b>	97.5	96.8	96.5	95.6	96.1	97.1
<b>Morrisville Elementary</b>	<b>4th Gd:</b>	95.7	96.1	95.1	97.6	98.7	98.8
	<b>5th Gd:</b>	97.9	99.4	93.5	96.5	100.0	97.4
	<hr/>						
516	<b>3rd Gd:</b>	92.3	91.5	94.3	87.9	91.5	87.9
<b>North Ridge Elementary</b>	<b>4th Gd:</b>	83.3	94.1	95.9	92.3	96.4	99.0
	<b>5th Gd:</b>	93.2	95.7	98.0	92.1	93.6	97.9
	<hr/>						
520	<b>3rd Gd:</b>	84.9	91.9	93.0	83.8	92.8	94.8
<b>Northwoods Elementary</b>	<b>4th Gd:</b>	89.9	92.9	89.5	94.4	92.9	96.0
	<b>5th Gd:</b>	86.6	93.6	98.9	89.8	93.6	97.9
	<hr/>						
522	<b>3rd Gd:</b>	96.5	95.1	95.1	95.9	96.3	97.5
<b>Oak Grove Elementary</b>	<b>4th Gd:</b>	92.9	94.6	96.4	95.2	98.2	98.8
	<b>5th Gd:</b>	97.5	96.9	98.2	98.5	97.6	98.8
	<hr/>						
523	<b>3rd Gd:</b>	95.2	90.7	92.2	91.0	93.5	94.0
<b>Olive Chanel Elementary</b>	<b>4th Gd:</b>	85.0	96.9	92.7	93.2	97.7	97.1
	<b>5th Gd:</b>	91.4	91.9	96.4	91.4	94.6	97.1
	<hr/>						
524	<b>3rd Gd:</b>	85.1	81.8	81.4	93.6	78.8	79.1
<b>Olds Elementary</b>	<b>4th Gd:</b>	75.0	84.0	92.5	92.5	96.0	92.9
	<b>5th Gd:</b>	92.2	82.9	95.7	96.1	95.1	97.9
	<hr/>						
525	<b>3rd Gd:</b>	91.4	90.0	78.9	91.4	90.0	84.9
<b>Partnership Elementary</b>	<b>4th Gd:</b>		83.3	88.9		94.4	100.0
	<b>5th Gd:</b>			82.9			94.3
	<hr/>						
530	<b>3rd Gd:</b>	82.2	89.1	84.1	82.2	83.7	90.7
<b>Pennv Road Elementary</b>	<b>4th Gd:</b>	83.7	77.8	84.2	91.3	91.9	90.4
	<b>5th Gd:</b>	88.3	97.7	96.7	89.2	96.6	95.6
	<hr/>						
531	<b>3rd Gd:</b>	83.9	91.3	90.1	79.8	95.2	88.1
<b>Pleasant Union Elementary</b>	<b>4th Gd:</b>	90.1	91.1	93.1	95.0	95.5	98.0
	<b>5th Gd:</b>	96.4	95.2	97.3	93.7	94.4	94.5
	<hr/>						
532	<b>3rd Gd:</b>	86.3	83.3	84.3	75.5	80.3	84.3
<b>Poe Elementary</b>	<b>4th Gd:</b>	71.7	78.7	88.2	82.6	80.9	96.1
	<b>5th Gd:</b>	100.0	92.1	95.4	100.0	94.7	97.7
	<hr/>						

**Appendix B: Percent of Students In Levels III and IV on EOG Tests for Three Years**

		Reading			Mathematics		
		2000	2001	2002	2000	2001	2002
536	<b>3rd Gd:</b>	70.3	71.1	81.2	58.7	62.9	78.6
<b>Powell Elementary</b>	<b>4th Gd:</b>	91.4	67.4	81.4	93.0	81.1	94.2
	<b>5th Gd:</b>	87.1	95.9	89.9	95.7	97.3	87.8
540	<b>3rd Gd:</b>	73.6	72.6	69.0	72.1	65.3	73.2
<b>Rand Road Elementary</b>	<b>4th Gd:</b>	68.9	74.0	82.7	75.0	83.7	97.4
	<b>5th Gd:</b>	70.7	82.8	93.7	74.4	83.9	94.7
542	<b>3rd Gd:</b>	88.7	85.5	73.2	81.1	80.3	75.9
<b>Reedy Creek Elementary</b>	<b>4th Gd:</b>	85.2	86.9	83.9	95.4	90.9	87.5
	<b>5th Gd:</b>	91.8	96.3	89.4	89.8	93.5	91.5
544	<b>3rd Gd:</b>	77.7	68.4	81.6	68.0	69.6	79.6
<b>Rolesville Elementary</b>	<b>4th Gd:</b>	73.8	81.4	80.6	85.9	93.0	92.5
	<b>5th Gd:</b>	83.3	85.0	86.4	84.4	83.9	88.5
548	<b>3rd Gd:</b>	80.5	84.6	91.4	81.6	81.8	91.4
<b>Root Elementary</b>	<b>4th Gd:</b>	88.1	86.4	98.4	92.9	95.0	98.4
	<b>5th Gd:</b>	93.8	88.2	87.3	96.8	89.7	93.6
550	<b>3rd Gd:</b>		93.1	92.0		93.1	95.4
<b>Salem Elementary</b>	<b>4th Gd:</b>		91.7	91.4		92.9	96.2
	<b>5th Gd:</b>		88.2	94.9		93.4	93.7
560	<b>3rd Gd:</b>	71.4	74.8	82.2	64.8	76.0	72.0
<b>Smith Elementary</b>	<b>4th Gd:</b>	68.9	83.1	72.8	84.6	94.0	90.6
	<b>5th Gd:</b>	82.7	86.4	84.4	84.6	78.7	83.0
564	<b>3rd Gd:</b>	89.7	91.8	92.1	88.5	87.8	94.7
<b>Stough Elementary</b>	<b>4th Gd:</b>	83.3	93.4	95.2	89.7	93.4	92.9
	<b>5th Gd:</b>	94.9	89.5	93.4	94.9	90.7	97.4
568	<b>3rd Gd:</b>	88.2	76.3	90.1	75.8	71.1	88.7
<b>Swift Creek Elementary</b>	<b>4th Gd:</b>	83.5	71.0	85.1	85.4	77.0	92.1
	<b>5th Gd:</b>	87.7	82.1	92.8	91.1	79.4	95.2
570	<b>3rd Gd:</b>	91.9	91.9	90.5	90.5	95.5	91.8
<b>Timber Drive Elementary</b>	<b>4th Gd:</b>	85.2	90.7	93.2	97.2	97.8	99.3
	<b>5th Gd:</b>	90.6	92.5	94.1	92.5	96.3	98.7
572	<b>3rd Gd:</b>	64.3	70.0	76.2	53.6	70.0	73.2
<b>Underwood Elementary @ C</b>	<b>4th Gd:</b>	73.0	67.3	75.5	83.9	76.9	81.1
	<b>5th Gd:</b>	86.1	83.0	81.3	83.1	88.5	83.3
576	<b>3rd Gd:</b>	79.2	82.1	80.9	84.7	87.6	82.6
<b>Vance Elementary</b>	<b>4th Gd:</b>	72.6	76.3	86.9	83.7	90.0	97.6
	<b>5th Gd:</b>	84.0	82.1	95.9	93.3	88.1	97.3
580	<b>3rd Gd:</b>	88.5	86.4	78.7	88.5	85.2	86.8
<b>Vandora Springs Elementary</b>	<b>4th Gd:</b>	81.7	94.7	83.5	94.0	100.0	93.7
	<b>5th Gd:</b>	82.0	92.6	86.5	85.5	93.6	94.7

**Appendix B: Percent of Students In Levels III and IV on EOG Tests for Three Years**

		Reading			Mathematics		
		2000	2001	2002	2000	2001	2002
584	<b>3rd Gd:</b>	81.4	89.6	85.8	72.9	79.9	74.2
<b>Wake Forest Elementary</b>	<b>4th Gd:</b>	74.5	82.5	84.7	87.3	92.0	92.0
	<b>5th Gd:</b>	86.7	88.4	93.2	83.2	87.1	89.8
593	<b>3rd Gd:</b>	89.1	84.9	89.5	80.0	86.1	88.6
<b>Wakefield Elementary</b>	<b>4th Gd:</b>	84.3	88.1	88.8	92.2	94.1	94.4
	<b>5th Gd:</b>		90.6	99.1		92.9	94.7
596	<b>3rd Gd:</b>	83.0	86.5	86.5	72.3	86.5	84.4
<b>Washington Elementary</b>	<b>4th Gd:</b>	84.0	83.0	92.0	87.7	95.7	95.0
	<b>5th Gd:</b>	84.8	89.8	91.4	86.7	91.7	92.5
598	<b>3rd Gd:</b>	91.7	86.7	93.9	90.7	94.6	91.4
<b>Weatherstone Elementary</b>	<b>4th Gd:</b>	85.8	93.3	94.2	94.5	97.9	99.0
	<b>5th Gd:</b>	91.5	99.1	99.0	94.3	100.0	99.0
600	<b>3rd Gd:</b>	62.0	71.7	88.6	63.3	62.8	86.5
<b>Wendell Elementary</b>	<b>4th Gd:</b>	73.3	76.2	89.9	91.9	87.2	96.7
	<b>5th Gd:</b>	90.2	86.5	90.0	91.3	94.4	91.1
606	<b>3rd Gd:</b>	86.8	93.4	89.6	89.7	93.5	87.6
<b>West Lake Elementary</b>	<b>4th Gd:</b>	89.4	93.5	89.1	94.7	99.4	94.5
	<b>5th Gd:</b>	94.3	96.1	94.8	94.9	97.7	97.7
616	<b>3rd Gd:</b>	82.0	81.5	88.0	82.5	88.7	86.9
<b>Wilburn Elementary</b>	<b>4th Gd:</b>	82.3	84.3	82.1	90.8	92.2	92.6
	<b>5th Gd:</b>	91.1	90.1	93.4	93.8	93.7	93.6
618	<b>3rd Gd:</b>	81.6	78.7	89.6	70.1	72.1	82.4
<b>Wildwood Forest Elementary</b>	<b>4th Gd:</b>	74.4	82.8	82.9	84.4	85.0	91.1
	<b>5th Gd:</b>		88.8	93.5		88.8	89.7
620	<b>3rd Gd:</b>	86.5	79.3	97.2	82.7	71.2	94.4
<b>Wilev Elementary</b>	<b>4th Gd:</b>	85.0	75.9	86.0	93.3	89.5	98.0
	<b>5th Gd:</b>	94.6	90.0	81.8	91.1	88.3	87.3
624	<b>3rd Gd:</b>	87.1	82.1	93.8	86.5	92.9	93.8
<b>Willow Springs Elementary</b>	<b>4th Gd:</b>	76.5	83.7	87.8	84.0	95.4	96.4
	<b>5th Gd:</b>	86.5	90.4	88.0	94.2	95.7	93.2
626	<b>3rd Gd:</b>		81.3	88.2		81.6	80.9
<b>Yates Mill Elementary</b>	<b>4th Gd:</b>		89.9	81.5		95.7	88.9
	<b>5th Gd:</b>		91.7	89.5		97.9	90.8
628	<b>3rd Gd:</b>	83.7	81.3	86.5	88.8	81.3	91.9
<b>York Elementary</b>	<b>4th Gd:</b>	81.9	85.4	81.3	88.6	89.9	90.6
	<b>5th Gd:</b>	92.8	85.1	93.4	92.9	89.7	96.7
632	<b>3rd Gd:</b>	76.4	74.1	79.8	79.0	79.7	75.0
<b>Zebulon Elementary</b>	<b>4th Gd:</b>	72.9	83.9	80.0	90.6	92.4	88.2
	<b>5th Gd:</b>	79.1	78.2	89.4	91.2	86.3	95.3

## Appendix C: Percent of Students In Levels III and IV on EOG Tests for Three Years

		Reading			Mathematics		
		2000	2001	2002	2000	2001	2002
312 Anex Middle	6th Gd:	84.8	88.4	86.4	91.2	92.7	94.1
	7th Gd:	88.6	92.9	89.2	91.8	93.9	91.7
	8th Gd:	88.6	92.7	93.9	90.2	92.7	93.0
356 Carnage Middle	6th Gd:	72.5	73.6	74.9	80.3	81.6	86.6
	7th Gd:	76.6	75.5	77.1	84.1	76.0	81.7
	8th Gd:	84.7	85.4	88.1	79.7	83.7	84.2
360 Carroll Middle	6th Gd:	72.7	72.2	81.1	85.8	83.2	91.3
	7th Gd:	87.9	85.0	81.6	92.8	81.7	88.3
	8th Gd:	91.3	90.8	88.7	88.3	88.4	83.9
370 Centennial Middle	6th Gd:		83.1	76.3		87.1	86.3
	7th Gd:		75.9	86.5		78.6	87.5
	8th Gd:		88.9	86.5		80.8	79.7
388 Daniels Middle	6th Gd:	73.2	83.4	78.8	82.9	88.9	82.3
	7th Gd:	84.0	84.5	88.3	82.8	83.2	88.0
	8th Gd:	87.1	91.2	91.8	85.4	84.8	88.1
391 Davis Drive Middle	6th Gd:	90.1	90.8	92.4	92.1	95.4	98.5
	7th Gd:	91.5	92.4	95.1	93.6	95.1	97.4
	8th Gd:	93.2	95.0	96.8	92.7	93.5	94.1
394 Dillard Dr. Middle	6th Gd:	80.1	79.4	83.2	87.5	87.3	90.3
	7th Gd:	89.0	86.3	92.8	92.4	88.0	94.9
	8th Gd:		95.2	94.6		92.6	91.3
399 Durant Road Middle	6th Gd:	83.7	89.3	91.1	91.3	95.8	96.8
	7th Gd:	91.5	91.0	95.3	93.9	93.2	95.8
	8th Gd:	95.6	97.4	96.3	90.9	93.6	93.7
400 East Carv Middle	6th Gd:	77.4	79.3	79.3	87.0	88.0	90.4
	7th Gd:	83.7	85.9	83.5	86.5	88.4	89.7
	8th Gd:	93.2	89.2	90.0	91.0	90.8	89.6
404 East Garner Middle	6th Gd:	58.6	69.2	63.6	73.7	79.0	78.9
	7th Gd:	73.2	71.7	82.5	77.5	80.3	87.8
	8th Gd:	88.3	91.2	84.2	80.9	78.9	79.2
408 East Millbrook Middle	6th Gd:	68.7	77.0	74.6	73.0	81.9	86.1
	7th Gd:	81.2	77.1	80.7	78.5	83.4	84.9
	8th Gd:	83.3	86.2	93.2	76.5	74.9	86.0
410 East Wake Middle	6th Gd:	65.7	68.3	74.1	77.0	77.3	80.7
	7th Gd:	72.9	72.5	79.5	76.6	80.3	83.3
	8th Gd:	80.6	82.3	79.5	77.8	76.7	77.1
424 Fuquay-Varina Middle	6th Gd:	75.5	70.7	78.2	82.5	85.2	87.0
	7th Gd:	79.5	85.5	78.5	81.1	84.9	83.1
	8th Gd:	83.7	87.6	91.1	78.1	81.4	82.8

## Appendix C: Percent of Students In Levels III and IV on EOG Tests for Three Years

		Reading			Mathematics		
		2000	2001	2002	2000	2001	2002
471	<b>6th Gd:</b>	81.9	86.8	84.5	86.6	92.4	90.1
<b>Leesville Road Middle</b>	<b>7th Gd:</b>	88.2	93.1	90.7	92.0	90.7	93.0
	<b>8th Gd:</b>	94.0	93.4	93.9	92.0	92.8	93.6
	<hr/>						
472	<b>6th Gd:</b>	85.3	87.7	88.8	89.7	92.6	92.9
<b>Ligon Middle</b>	<b>7th Gd:</b>	92.0	90.5	94.3	90.9	95.5	97.4
	<b>8th Gd:</b>	87.5	95.8	96.0	82.5	92.8	93.1
	<hr/>						
484	<b>6th Gd:</b>	93.5	92.0	97.4	94.3	96.7	97.7
<b>Lufkin Road Middle</b>	<b>7th Gd:</b>		96.0	93.8		98.4	97.1
	<b>8th Gd:</b>			97.9			97.5
	<hr/>						
492	<b>6th Gd:</b>	81.8	82.2	84.1	89.0	89.6	90.3
<b>Martin Middle</b>	<b>7th Gd:</b>	83.5	88.5	85.5	86.7	90.0	88.3
	<b>8th Gd:</b>	89.0	90.0	90.8	86.9	86.4	87.8
	<hr/>						
512	<b>6th Gd:</b>	63.4	63.0	73.4	73.9	72.8	87.5
<b>North Garner Middle</b>	<b>7th Gd:</b>	67.2	68.6	70.6	77.2	84.6	85.9
	<b>8th Gd:</b>	80.9	79.2	80.9	80.5	69.3	77.9
	<hr/>						
592	<b>6th Gd:</b>	72.9	71.2	80.6	84.4	83.2	88.3
<b>Wake Forest-Rolesville Middl</b>	<b>7th Gd:</b>	87.1	79.9	81.0	85.0	81.6	89.0
	<b>8th Gd:</b>	90.7	91.6	86.2	86.5	85.5	79.7
	<hr/>						
594	<b>6th Gd:</b>	81.8	86.9	87.8	92.4	93.2	94.7
<b>Wakefield Middle</b>	<b>7th Gd:</b>		86.2	89.3		87.5	93.3
	<b>8th Gd:</b>			92.2			88.5
	<hr/>						
604	<b>6th Gd:</b>	79.7	83.9	91.4	90.0	90.7	95.6
<b>West Carv Middle</b>	<b>7th Gd:</b>	91.2	89.9	89.1	90.7	90.5	92.1
	<b>8th Gd:</b>	90.9	93.5	94.8	90.6	94.4	93.5
	<hr/>						
607	<b>6th Gd:</b>	89.8	92.2	91.3	94.6	94.9	97.0
<b>West Lake Middle</b>	<b>7th Gd:</b>	91.8	96.0	94.5	94.7	95.8	94.5
	<b>8th Gd:</b>	95.0	96.8	97.0	93.7	95.0	96.6
	<hr/>						
608	<b>6th Gd:</b>	77.5	88.7	84.4	84.1	92.7	88.3
<b>West Millbrook Middle</b>	<b>7th Gd:</b>	85.0	86.7	89.6	85.3	93.3	91.8
	<b>8th Gd:</b>	85.2	92.4	97.0	83.6	90.4	94.7
	<hr/>						
636	<b>6th Gd:</b>	67.5	68.9	76.3	73.2	84.0	83.2
<b>Zebulon Middle</b>	<b>7th Gd:</b>	77.7	75.2	84.6	84.1	79.3	89.3
	<b>8th Gd:</b>	86.0	83.5	85.8	79.2	84.3	85.1
	<hr/>						

## Appendix D: EOG Mean Scale Scores for Three Years

Note: Mathematics scale scores changed from a 100 scale to a 200 scale in the 2001 school year.

		Reading			Mathematics		
		2000	2001	2002	2000	2001	2002
304	<b>3rd Gd:</b>	151.8	152.9	153.5	149.7	256.5	257.2
<b>Adams Elementary</b>	<b>4th Gd:</b>	154.8	157.3	156.5	159.2	263.8	263.2
	<b>5th Gd:</b>	160.3	160.3	162.4	166.2	266.4	266.9
308	<b>3rd Gd:</b>	153.0	152.7	154.0	148.6	256.6	258.3
<b>Apex Elementary</b>	<b>4th Gd:</b>	156.5	157.0	156.6	158.6	262.8	264.1
	<b>5th Gd:</b>	160.9	161.6	162.1	165.3	267.6	269.2
320	<b>3rd Gd:</b>	147.9	148.2	151.4	143.9	250.6	255.4
<b>Aversboro Elementary</b>	<b>4th Gd:</b>	147.4	148.7	152.5	150.7	254.7	256.2
	<b>5th Gd:</b>	155.3	153.6	156.5	156.2	255.7	259.5
326	<b>3rd Gd:</b>	151.6	150.9	151.4	149.5	255.1	255.4
<b>Bailevwick Elementary</b>	<b>4th Gd:</b>	152.9	154.7	157.0	155.6	259.9	261.9
	<b>5th Gd:</b>	160.0	160.6	159.9	163.5	265.8	265.2
328	<b>3rd Gd:</b>	153.9	153.6	154.1	149.2	255.6	257.9
<b>Baucom Elementary</b>	<b>4th Gd:</b>	156.4	156.9	157.6	160.0	261.5	263.8
	<b>5th Gd:</b>	161.2	162.1	160.7	167.1	268.3	267.1
334	<b>3rd Gd:</b>	152.0	155.4	155.7	151.3	258.9	260.3
<b>Brassfield Elementary</b>	<b>4th Gd:</b>	155.3	158.6	159.2	160.9	265.7	266.0
	<b>5th Gd:</b>	159.7	163.0	162.3	165.1	270.4	271.0
336	<b>3rd Gd:</b>	145.0	144.5	144.6	142.8	249.6	248.8
<b>Brentwood Elementary</b>	<b>4th Gd:</b>	147.2	147.9	150.4	152.0	252.4	253.3
	<b>5th Gd:</b>	155.4	154.5	155.1	161.7	260.4	259.1
340	<b>3rd Gd:</b>	152.5	151.2	151.7	149.5	253.6	254.3
<b>Briarcliff Elementary</b>	<b>4th Gd:</b>	152.2	156.1	154.2	154.8	260.7	258.0
	<b>5th Gd:</b>	159.0	161.8	160.6	164.2	265.2	266.5
344	<b>3rd Gd:</b>	144.5	147.9	146.3	141.2	250.0	249.6
<b>Brooks Elementary</b>	<b>4th Gd:</b>	148.0	150.9	151.0	147.8	255.0	254.6
	<b>5th Gd:</b>	156.5	158.2	158.1	159.8	261.6	261.9
352	<b>3rd Gd:</b>	150.7	150.5	147.8	146.7	252.4	251.1
<b>Bugg Elementary</b>	<b>4th Gd:</b>	152.6	155.9	152.3	154.2	259.4	257.6
	<b>5th Gd:</b>	156.4	158.5	159.3	158.2	261.1	261.7
362	<b>3rd Gd:</b>	146.0	147.1	143.2	142.9	250.3	247.9
<b>Carver Elementary</b>	<b>4th Gd:</b>	148.5	151.8	149.0	153.0	257.6	254.5
	<b>5th Gd:</b>	154.8	155.2	156.3	161.1	261.7	263.7
364	<b>3rd Gd:</b>	146.9	148.3	152.2	143.5	251.4	255.7
<b>Carv Elementary</b>	<b>4th Gd:</b>	151.3	151.2	152.1	153.8	256.2	259.4
	<b>5th Gd:</b>	156.0	156.8	158.9	161.3	261.2	263.5
376	<b>3rd Gd:</b>	150.2	152.9	152.7	149.2	256.0	255.9
<b>Combs Elementary</b>	<b>4th Gd:</b>	157.2	155.7	156.9	161.2	263.3	262.4
	<b>5th Gd:</b>	158.8	160.9	159.4	165.2	266.5	268.2

## Appendix D: EOG Mean Scale Scores for Three Years

Note: Mathematics scale scores changed from a 100 scale to a 200 scale in the 2001 school year.

		Reading			Mathematics		
		2000	2001	2002	2000	2001	2002
380	<b>3rd Gd:</b>	144.5	147.2	146.9	140.4	250.7	250.5
<b>Conn Elementary</b>	<b>4th Gd:</b>	152.2	149.4	151.3	154.8	255.8	257.7
	<b>5th Gd:</b>	155.4	158.1	156.5	160.9	262.4	262.2
384	<b>3rd Gd:</b>	141.1	146.2	147.0	136.2	249.7	250.7
<b>Creech Road Elementary</b>	<b>4th Gd:</b>	146.4	149.6	148.5	149.8	255.3	257.8
	<b>5th Gd:</b>	152.3	154.5	153.5	154.6	256.8	257.4
390	<b>3rd Gd:</b>	154.8	154.7	156.1	155.2	257.7	259.1
<b>Davis Drive Elementary</b>	<b>4th Gd:</b>	158.0	158.8	158.3	162.1	265.1	263.8
	<b>5th Gd:</b>	162.2	163.2	163.0	168.4	268.0	269.9
393	<b>3rd Gd:</b>	149.7	151.2	151.5	145.9	255.6	255.5
<b>Dillard Dr. Elementary</b>	<b>4th Gd:</b>	154.8	155.0	155.1	159.4	259.3	259.8
	<b>5th Gd:</b>	158.9	158.9	157.3	164.6	262.1	261.7
396	<b>3rd Gd:</b>	149.2	148.3	149.4	142.8	251.1	252.3
<b>Douglas Elementary</b>	<b>4th Gd:</b>	154.1	155.0	154.6	155.6	257.9	259.6
	<b>5th Gd:</b>	157.8	159.4	159.5	160.7	262.8	264.9
398	<b>3rd Gd:</b>	150.9	153.7	153.0	148.4	257.0	256.6
<b>Durant Road Elementary</b>	<b>4th Gd:</b>	155.3	155.4	157.0	159.2	260.3	261.5
	<b>5th Gd:</b>	161.3	160.8	159.5	167.5	268.1	266.1
414	<b>3rd Gd:</b>	148.8	151.3	152.3	144.6	255.5	256.6
<b>Farmington Woods Elementa</b>	<b>4th Gd:</b>	153.1	154.6	155.2	154.4	260.0	260.1
	<b>5th Gd:</b>	157.9	159.3	160.1	160.2	265.2	265.0
415	<b>3rd Gd:</b>	148.7	149.0	147.9	143.5	252.0	252.0
<b>Fox Road Elementary</b>	<b>4th Gd:</b>	151.8	152.3	154.2	153.6	257.3	259.5
	<b>5th Gd:</b>	157.4	157.4	157.3	159.9	261.0	260.9
416	<b>3rd Gd:</b>	148.6	150.3	150.7	143.7	252.1	253.1
<b>Fuller Elementary</b>	<b>4th Gd:</b>	151.6	154.7	155.3	152.8	257.7	258.0
	<b>5th Gd:</b>	156.6	158.8	159.6	158.3	260.3	263.6
420	<b>3rd Gd:</b>	146.1	147.7	149.2	143.2	252.2	253.0
<b>Fuquav-Varina Elementary</b>	<b>4th Gd:</b>	148.4	152.8	152.2	151.2	258.4	257.0
	<b>5th Gd:</b>	155.5	156.1	157.7	161.2	259.2	261.3
439	<b>3rd Gd:</b>		154.3	155.2		257.9	258.2
<b>Green Hope Elementary</b>	<b>4th Gd:</b>		159.6	158.1		265.7	264.8
	<b>5th Gd:</b>		163.8	163.6		273.7	274.3
440	<b>3rd Gd:</b>	151.7	152.4	153.6	149.0	256.3	256.7
<b>Green Elementary</b>	<b>4th Gd:</b>	154.1	155.5	156.0	157.4	261.5	261.6
	<b>5th Gd:</b>	159.6	159.4	161.4	166.1	266.4	268.5
442	<b>3rd Gd:</b>	150.1	151.4	151.7	147.3	255.4	254.9
<b>Hilburn Drive Elementary</b>	<b>4th Gd:</b>	151.4	153.4	154.8	152.4	258.9	259.0
	<b>5th Gd:</b>	158.4	160.6	162.2	163.5	266.9	268.9

## Appendix D: EOG Mean Scale Scores for Three Years

Note: Mathematics scale scores changed from a 100 scale to a 200 scale in the 2001 school year.

		Reading			Mathematics		
		2000	2001	2002	2000	2001	2002
446	<b>3rd Gd:</b>	144.2	147.3	148.4	139.9	249.6	251.0
<b>Hodge Road Elementary</b>	<b>4th Gd:</b>	147.0	148.8	151.7	149.9	253.2	257.8
	<b>5th Gd:</b>	154.2	154.5	157.1	157.4	258.5	259.4
447	<b>3rd Gd:</b>	147.8	148.8	150.7	145.5	252.6	254.9
<b>Holly Springs Elementary</b>	<b>4th Gd:</b>	152.1	152.2	152.3	155.9	258.1	258.9
	<b>5th Gd:</b>	156.6	157.8	158.3	162.3	262.4	264.6
448	<b>3rd Gd:</b>	152.6	150.9	150.4	149.4	254.9	254.5
<b>Hunter Elementary</b>	<b>4th Gd:</b>	155.2	155.4	157.6	157.6	260.0	261.5
	<b>5th Gd:</b>	162.1	161.5	161.0	166.1	267.6	267.1
452	<b>3rd Gd:</b>	151.7	150.2	151.2	149.7	254.3	256.7
<b>Jeffreys Grove Elementary</b>	<b>4th Gd:</b>	155.4	155.7	154.5	159.2	260.4	263.1
	<b>5th Gd:</b>	158.7	158.7	160.0	163.7	264.2	268.4
454	<b>3rd Gd:</b>	152.1	150.7	151.1	149.0	254.5	254.6
<b>Jones Dairy Elementary</b>	<b>4th Gd:</b>	154.2	156.3	155.0	156.5	260.2	259.8
	<b>5th Gd:</b>	160.5	159.3	160.3	164.8	264.0	265.3
456	<b>3rd Gd:</b>	147.1	149.4	148.0	144.7	251.9	250.4
<b>Jovner Elementary</b>	<b>4th Gd:</b>	151.5	152.1	151.0	152.9	255.9	253.3
	<b>5th Gd:</b>	158.7	157.0	155.5	162.8	261.4	259.6
460	<b>3rd Gd:</b>	154.5	153.6	151.1	154.0	256.4	255.8
<b>Kingswood Elementary</b>	<b>4th Gd:</b>	155.8	157.2	157.0	162.5	264.4	262.9
	<b>5th Gd:</b>	162.2	162.1	163.7	172.6	273.1	272.4
464	<b>3rd Gd:</b>	143.9	146.1	144.9	138.3	249.5	249.0
<b>Knightdale Elementary</b>	<b>4th Gd:</b>	150.0	149.4	148.5	150.4	253.6	254.5
	<b>5th Gd:</b>	153.1	156.1	154.7	154.0	257.1	255.7
468	<b>3rd Gd:</b>	149.9	150.4	153.0	146.4	256.2	258.7
<b>Lacy Elementary</b>	<b>4th Gd:</b>	155.8	154.4	156.5	157.8	259.3	262.9
	<b>5th Gd:</b>	160.4	161.8	161.7	162.5	267.9	266.9
469	<b>3rd Gd:</b>	148.7	153.1	154.5	146.5	257.1	258.8
<b>Leesville Road Elementary</b>	<b>4th Gd:</b>	155.0	157.4	157.7	158.6	262.3	264.2
	<b>5th Gd:</b>	160.4	161.6	161.5	167.0	267.4	267.9
470	<b>3rd Gd:</b>	151.6	150.2	150.4	149.4	252.9	253.5
<b>Lead Mine Elementary</b>	<b>4th Gd:</b>	153.0	154.8	156.0	155.6	259.6	260.4
	<b>5th Gd:</b>	158.9	160.3	160.1	163.5	265.7	267.1
476	<b>3rd Gd:</b>	146.9	148.2	152.1	145.0	252.5	255.9
<b>Lincoln Heights Elementary</b>	<b>4th Gd:</b>	148.9	155.1	151.5	151.2	257.7	255.9
	<b>5th Gd:</b>	156.3	157.0	159.6	158.2	259.8	263.0
480	<b>3rd Gd:</b>	147.6	149.4	149.6	144.9	251.4	254.3
<b>Lockhart Elementary</b>	<b>4th Gd:</b>	151.3	154.3	154.1	154.1	258.6	259.3
	<b>5th Gd:</b>	156.6	158.1	159.4	157.9	261.1	262.6

## Appendix D: EOG Mean Scale Scores for Three Years

Note: Mathematics scale scores changed from a 100 scale to a 200 scale in the 2001 school year.

		Reading			Mathematics		
		2000	2001	2002	2000	2001	2002
488	<b>3rd Gd:</b>	148.6	148.8	149.9	145.7	251.6	253.0
<b>Lvnn Road Elementary</b>	<b>4th Gd:</b>	151.9	153.2	152.0	156.3	257.1	256.6
	<b>5th Gd:</b>	156.3	156.3	158.3	159.7	260.9	262.5
	<hr/>						
494	<b>3rd Gd:</b>		149.3	150.9		252.3	255.1
<b>Middle Creek Elementary</b>	<b>4th Gd:</b>		150.9	153.6		255.8	258.6
	<b>5th Gd:</b>		155.4	157.8		261.6	263.5
	<hr/>						
496	<b>3rd Gd:</b>	146.0	147.1	144.2	142.4	249.7	248.6
<b>Millbrook Elementary</b>	<b>4th Gd:</b>	151.6	150.5	150.4	151.3	252.5	255.4
	<b>5th Gd:</b>	157.1	157.0	156.1	162.3	259.6	258.6
	<hr/>						
504	<b>3rd Gd:</b>	155.0	154.8	155.3	154.3	258.5	259.9
<b>Morrisville Elementary</b>	<b>4th Gd:</b>	158.4	158.3	158.0	162.0	263.8	265.2
	<b>5th Gd:</b>	162.3	163.1	161.4	168.0	269.3	268.8
	<hr/>						
516	<b>3rd Gd:</b>	152.5	151.9	151.6	149.7	254.0	253.7
<b>North Ridge Elementary</b>	<b>4th Gd:</b>	152.5	156.1	155.6	156.3	259.3	260.2
	<b>5th Gd:</b>	158.6	159.2	160.0	162.4	262.7	266.0
	<hr/>						
520	<b>3rd Gd:</b>	150.9	152.0	153.0	148.4	255.1	256.1
<b>Northwoods Elementary</b>	<b>4th Gd:</b>	156.0	155.2	154.2	161.1	259.3	259.3
	<b>5th Gd:</b>	158.6	160.7	161.7	164.0	266.2	266.7
	<hr/>						
522	<b>3rd Gd:</b>	154.3	154.4	154.8	152.7	257.3	258.1
<b>Oak Grove Elementary</b>	<b>4th Gd:</b>	157.6	157.6	158.6	160.4	264.2	263.6
	<b>5th Gd:</b>	162.7	163.2	163.3	169.3	271.4	271.6
	<hr/>						
523	<b>3rd Gd:</b>	152.3	152.7	152.0	151.3	256.7	257.4
<b>Olive Chapel Elementary</b>	<b>4th Gd:</b>	154.4	157.2	157.1	156.5	262.3	262.0
	<b>5th Gd:</b>	159.6	160.4	161.4	163.6	264.7	267.5
	<hr/>						
524	<b>3rd Gd:</b>	149.9	147.8	149.1	149.8	250.3	252.9
<b>Olds Elementary</b>	<b>4th Gd:</b>	151.3	153.7	155.3	157.5	260.6	262.3
	<b>5th Gd:</b>	159.5	157.7	159.6	165.1	261.9	265.9
	<hr/>						
525	<b>3rd Gd:</b>	151.5	152.6	149.8	149.2	255.4	254.3
<b>Partnership Elementary</b>	<b>4th Gd:</b>		154.6	155.9		259.5	263.5
	<b>5th Gd:</b>			159.1			264.9
	<hr/>						
530	<b>3rd Gd:</b>	149.9	150.7	151.1	148.0	254.2	256.3
<b>Pennv Road Elementary</b>	<b>4th Gd:</b>	153.1	151.3	152.8	155.8	257.0	258.6
	<b>5th Gd:</b>	160.3	162.2	160.9	166.7	267.9	266.5
	<hr/>						
531	<b>3rd Gd:</b>	150.7	152.5	151.6	147.6	255.5	254.9
<b>Pleasant Union Elementary</b>	<b>4th Gd:</b>	155.9	156.2	155.5	156.6	260.1	261.2
	<b>5th Gd:</b>	161.1	160.2	159.9	162.5	261.8	265.1
	<hr/>						
532	<b>3rd Gd:</b>	149.9	150.7	150.9	146.3	253.4	254.7
<b>Poe Elementary</b>	<b>4th Gd:</b>	150.4	153.1	154.9	152.3	256.3	260.8
	<b>5th Gd:</b>	166.0	157.5	160.1	167.4	260.6	263.8
	<hr/>						

## Appendix D: EOG Mean Scale Scores for Three Years

Note: Mathematics scale scores changed from a 100 scale to a 200 scale in the 2001 school year.

		Reading			Mathematics		
		2000	2001	2002	2000	2001	2002
536 <b>Powell Elementary</b>	<b>3rd Gd:</b>	145.1	146.8	148.7	141.1	250.1	253.2
	<b>4th Gd:</b>	153.9	150.1	152.9	156.8	253.7	258.2
	<b>5th Gd:</b>	158.0	159.0	157.6	164.9	265.2	262.0
540 <b>Rand Road Elementary</b>	<b>3rd Gd:</b>	146.1	145.5	146.1	144.0	249.5	251.8
	<b>4th Gd:</b>	148.4	150.2	150.8	148.5	254.8	258.1
	<b>5th Gd:</b>	153.6	155.0	157.3	156.7	258.4	262.5
542 <b>Reedy Creek Elementary</b>	<b>3rd Gd:</b>	150.2	149.6	147.3	146.0	252.5	251.9
	<b>4th Gd:</b>	153.1	152.9	152.7	156.4	258.1	257.2
	<b>5th Gd:</b>	159.1	159.3	157.5	163.2	262.6	262.3
544 <b>Rolesville Elementary</b>	<b>3rd Gd:</b>	146.5	146.4	148.2	142.1	250.1	250.8
	<b>4th Gd:</b>	149.3	150.2	151.9	151.6	254.5	257.9
	<b>5th Gd:</b>	155.6	156.8	156.0	158.8	258.5	259.2
548 <b>Root Elementary</b>	<b>3rd Gd:</b>	148.7	150.8	154.0	148.6	254.2	257.9
	<b>4th Gd:</b>	156.4	155.4	155.6	161.0	263.1	262.8
	<b>5th Gd:</b>	160.7	161.2	158.6	168.1	267.0	266.0
550 <b>Salem Elementary</b>	<b>3rd Gd:</b>		154.1	152.2		257.2	257.6
	<b>4th Gd:</b>		156.6	157.2		261.1	263.5
	<b>5th Gd:</b>		158.6	160.4		263.4	264.1
560 <b>Smith Elementary</b>	<b>3rd Gd:</b>	145.5	145.8	146.1	142.2	250.2	248.9
	<b>4th Gd:</b>	149.2	151.4	149.4	152.9	256.4	256.6
	<b>5th Gd:</b>	155.9	155.2	155.5	157.5	256.3	259.0
564 <b>Stough Elementary</b>	<b>3rd Gd:</b>	151.4	152.7	151.4	150.3	256.5	256.2
	<b>4th Gd:</b>	153.4	155.5	156.3	155.7	260.1	260.9
	<b>5th Gd:</b>	159.3	158.6	159.6	163.8	262.6	263.7
568 <b>Swift Creek Elementary</b>	<b>3rd Gd:</b>	149.0	149.0	150.9	146.0	252.7	254.1
	<b>4th Gd:</b>	153.3	150.6	154.5	156.5	255.0	259.2
	<b>5th Gd:</b>	158.7	158.1	158.2	161.7	260.4	262.9
570 <b>Timber Drive Elementary</b>	<b>3rd Gd:</b>	152.4	153.1	152.8	150.1	257.3	257.0
	<b>4th Gd:</b>	154.2	155.8	156.5	157.7	261.6	262.2
	<b>5th Gd:</b>	158.6	159.2	160.1	162.9	264.6	267.0
572 <b>Underwood Elementary @ C</b>	<b>3rd Gd:</b>	143.6	146.4	147.6	137.5	250.7	252.0
	<b>4th Gd:</b>	151.3	149.6	151.8	153.0	253.8	257.3
	<b>5th Gd:</b>	159.0	158.2	156.7	163.1	264.6	263.9
576 <b>Vance Elementary</b>	<b>3rd Gd:</b>	148.2	148.0	149.0	145.9	252.2	253.6
	<b>4th Gd:</b>	149.6	151.4	152.8	154.1	257.5	259.3
	<b>5th Gd:</b>	156.6	156.3	157.6	161.8	260.8	263.4
580 <b>Vandora Springs Elementary</b>	<b>3rd Gd:</b>	149.3	149.6	147.8	148.2	254.0	252.3
	<b>4th Gd:</b>	151.0	154.7	152.9	155.2	260.4	259.8
	<b>5th Gd:</b>	155.5	157.7	157.5	159.8	261.1	261.8

## Appendix D: EOG Mean Scale Scores for Three Years

Note: Mathematics scale scores changed from a 100 scale to a 200 scale in the 2001 school year.

		Reading			Mathematics		
		2000	2001	2002	2000	2001	2002
584	<b>3rd Gd:</b>	149.0	150.3	149.5	143.9	253.3	252.1
<b>Wake Forest Elementary</b>	<b>4th Gd:</b>	150.3	152.4	152.9	152.9	256.3	256.9
	<b>5th Gd:</b>	156.9	157.6	158.0	159.0	259.8	261.2
593	<b>3rd Gd:</b>	148.6	149.5	150.3	144.2	252.1	253.5
<b>Wakefield Elementary</b>	<b>4th Gd:</b>	153.3	154.7	153.8	156.3	258.2	258.5
	<b>5th Gd:</b>		158.8	159.7		264.6	264.0
596	<b>3rd Gd:</b>	149.8	151.0	152.3	146.5	255.4	256.6
<b>Washington Elementary</b>	<b>4th Gd:</b>	154.4	155.4	157.0	157.6	260.4	262.6
	<b>5th Gd:</b>	158.9	159.4	161.0	163.5	265.4	265.9
598	<b>3rd Gd:</b>	152.8	150.3	153.2	151.1	255.0	256.4
<b>Weatherstone Elementary</b>	<b>4th Gd:</b>	154.7	155.6	156.6	160.0	262.0	261.8
	<b>5th Gd:</b>	159.4	162.4	162.1	166.8	270.9	271.3
600	<b>3rd Gd:</b>	143.8	145.3	149.0	142.8	249.0	252.9
<b>Wendell Elementary</b>	<b>4th Gd:</b>	149.9	151.3	153.2	153.7	257.7	259.3
	<b>5th Gd:</b>	157.8	156.4	157.0	161.2	261.6	264.6
606	<b>3rd Gd:</b>	151.5	153.3	152.2	149.3	256.0	255.2
<b>West Lake Elementary</b>	<b>4th Gd:</b>	155.9	156.3	155.5	159.4	262.3	260.9
	<b>5th Gd:</b>	161.1	161.2	160.2	166.5	268.7	267.0
616	<b>3rd Gd:</b>	148.6	149.4	148.4	147.0	253.6	252.6
<b>Wilburn Elementary</b>	<b>4th Gd:</b>	151.2	151.5	151.7	154.2	255.8	257.2
	<b>5th Gd:</b>	158.6	157.8	158.2	164.2	261.9	261.5
618	<b>3rd Gd:</b>	148.1	147.2	149.7	142.9	250.1	253.6
<b>Wildwood Forest Elementary</b>	<b>4th Gd:</b>	150.4	152.9	151.4	154.3	257.6	255.7
	<b>5th Gd:</b>		158.0	159.2		262.2	261.5
620	<b>3rd Gd:</b>	149.2	149.1	154.6	146.4	252.0	255.1
<b>Wilev Elementary</b>	<b>4th Gd:</b>	154.9	153.4	157.6	161.1	260.3	264.9
	<b>5th Gd:</b>	162.7	160.0	158.4	166.8	264.0	264.8
624	<b>3rd Gd:</b>	149.2	150.0	151.5	146.7	255.4	254.7
<b>Willow Springs Elementary</b>	<b>4th Gd:</b>	150.8	152.6	153.7	151.7	257.3	259.3
	<b>5th Gd:</b>	156.9	157.8	157.8	163.6	263.2	264.9
626	<b>3rd Gd:</b>		147.8	150.3		250.8	253.2
<b>Yates Mill Elementary</b>	<b>4th Gd:</b>		154.4	151.6		260.7	256.7
	<b>5th Gd:</b>		157.5	158.7		262.5	265.4
628	<b>3rd Gd:</b>	150.2	148.9	150.9	149.4	252.7	255.9
<b>York Elementary</b>	<b>4th Gd:</b>	152.6	152.9	153.1	157.5	258.6	259.2
	<b>5th Gd:</b>	158.9	158.3	158.1	164.2	264.3	265.3
632	<b>3rd Gd:</b>	146.6	145.6	147.2	144.2	250.4	250.4
<b>Zebulon Elementary</b>	<b>4th Gd:</b>	149.5	151.2	151.0	154.6	256.7	255.8
	<b>5th Gd:</b>	154.4	154.2	156.1	160.5	258.6	261.6

## Appendix E: EOG Mean Scale Scores for Three Years

Note: Mathematics scale scores changed from a 100 scale to a 200 scale in the 2001 school year.

		Reading			Mathematics		
		2000	2001	2002	2000	2001	2002
312	<b>3rd Gd:</b>	160.9	161.7	161.7	170.3	268.1	269.5
<b>Anex Middle</b>	<b>4th Gd:</b>	163.4	165.9	164.4	175.4	273.9	273.0
	<b>5th Gd:</b>	165.3	166.9	167.1	180.0	275.4	277.4
356	<b>3rd Gd:</b>	158.3	158.0	159.1	166.3	264.0	267.7
<b>Carnage Middle</b>	<b>4th Gd:</b>	161.4	160.8	161.2	174.0	268.4	268.4
	<b>5th Gd:</b>	164.2	165.0	164.4	176.8	274.0	273.8
360	<b>3rd Gd:</b>	157.0	157.7	159.3	166.6	263.4	265.3
<b>Carroll Middle</b>	<b>4th Gd:</b>	162.8	161.2	161.8	173.7	266.9	269.7
	<b>5th Gd:</b>	165.7	164.9	164.4	178.9	271.1	271.5
370	<b>3rd Gd:</b>		160.8	158.7		265.1	265.0
<b>Centennial Middle</b>	<b>4th Gd:</b>		160.2	163.2		266.6	270.2
	<b>5th Gd:</b>		163.0	163.6		269.3	269.9
388	<b>3rd Gd:</b>	158.0	161.0	159.8	165.9	266.7	266.5
<b>Daniels Middle</b>	<b>4th Gd:</b>	162.8	162.0	164.2	173.9	268.8	272.1
	<b>5th Gd:</b>	164.3	166.4	166.2	177.4	273.7	273.1
391	<b>3rd Gd:</b>	162.4	163.1	164.4	170.7	270.0	272.0
<b>Davis Drive Middle</b>	<b>4th Gd:</b>	164.2	164.6	165.0	177.3	273.7	276.3
	<b>5th Gd:</b>	166.5	167.3	168.0	182.0	277.0	277.6
394	<b>3rd Gd:</b>	159.2	160.0	160.2	169.7	268.5	267.6
<b>Dillard Dr. Middle</b>	<b>4th Gd:</b>	163.9	162.6	164.8	179.0	271.0	276.1
	<b>5th Gd:</b>		168.2	167.4		277.5	277.5
399	<b>3rd Gd:</b>	160.0	162.0	162.1	168.5	268.9	269.6
<b>Durant Road Middle</b>	<b>4th Gd:</b>	164.3	164.0	165.3	176.0	272.2	274.9
	<b>5th Gd:</b>	166.6	167.5	167.1	179.8	275.6	275.7
400	<b>3rd Gd:</b>	159.1	159.3	159.0	168.9	266.1	264.7
<b>East Carv Middle</b>	<b>4th Gd:</b>	162.7	163.0	161.8	175.9	271.9	271.8
	<b>5th Gd:</b>	166.6	165.4	165.7	181.3	274.5	276.5
404	<b>3rd Gd:</b>	153.1	155.4	154.6	160.2	259.8	261.0
<b>East Garner Middle</b>	<b>4th Gd:</b>	158.7	158.9	160.6	167.7	264.7	266.7
	<b>5th Gd:</b>	162.9	164.6	162.7	173.4	269.0	268.9
408	<b>3rd Gd:</b>	155.8	157.4	157.1	162.6	262.8	263.3
<b>East Millbrook Middle</b>	<b>4th Gd:</b>	160.5	160.4	160.8	169.4	266.7	267.3
	<b>5th Gd:</b>	163.3	163.3	165.1	173.0	267.6	271.1
410	<b>3rd Gd:</b>	155.6	155.6	156.8	163.9	260.0	260.8
<b>East Wake Middle</b>	<b>4th Gd:</b>	158.9	159.2	159.6	167.7	265.4	266.0
	<b>5th Gd:</b>	162.3	161.1	161.9	173.8	267.1	268.9
424	<b>3rd Gd:</b>	157.9	156.7	158.5	166.4	264.5	264.8
<b>Fuquay-Varina Middle</b>	<b>4th Gd:</b>	161.1	162.3	160.7	170.2	267.6	267.6
	<b>5th Gd:</b>	162.7	163.7	165.0	174.6	270.2	271.7

## Appendix E: EOG Mean Scale Scores for Three Years

Note: Mathematics scale scores changed from a 100 scale to a 200 scale in the 2001 school year.

		Reading			Mathematics		
		2000	2001	2002	2000	2001	2002
471	<b>3rd Gd:</b>	159.8	160.6	161.4	168.8	266.8	268.3
<b>Leesville Road Middle</b>	<b>4th Gd:</b>	163.3	164.5	162.9	176.9	273.6	272.8
	<b>5th Gd:</b>	168.0	167.6	167.8	182.7	277.5	278.2
472	<b>3rd Gd:</b>	163.4	164.2	164.2	174.6	273.4	273.6
<b>Ligon Middle</b>	<b>4th Gd:</b>	166.3	166.5	167.1	180.3	278.2	279.4
	<b>5th Gd:</b>	166.3	169.3	169.8	180.9	280.2	283.1
484	<b>3rd Gd:</b>	163.1	163.6	164.7	171.9	269.5	271.6
<b>Lufkin Road Middle</b>	<b>4th Gd:</b>		165.8	165.8		276.3	276.3
	<b>5th Gd:</b>			168.7			280.8
492	<b>3rd Gd:</b>	160.9	161.5	161.8	172.4	269.0	269.5
<b>Martin Middle</b>	<b>4th Gd:</b>	163.1	164.1	164.0	177.4	274.6	274.3
	<b>5th Gd:</b>	166.6	167.0	167.1	181.4	275.9	276.9
512	<b>3rd Gd:</b>	153.8	154.3	156.4	162.5	259.9	263.8
<b>North Garner Middle</b>	<b>4th Gd:</b>	157.4	157.9	158.7	169.5	267.1	268.5
	<b>5th Gd:</b>	161.7	161.3	160.8	174.8	267.3	268.2
592	<b>3rd Gd:</b>	157.1	156.5	158.5	165.5	261.9	263.8
<b>Wake Forest-Rolesville Middl</b>	<b>4th Gd:</b>	162.4	160.6	161.0	172.1	266.2	267.9
	<b>5th Gd:</b>	164.7	164.9	163.1	177.9	272.3	270.1
594	<b>3rd Gd:</b>		161.7	161.5		268.1	268.3
<b>Wakefield Middle</b>	<b>4th Gd:</b>		163.3	164.4		271.8	273.3
	<b>5th Gd:</b>			166.4			274.6
604	<b>3rd Gd:</b>	159.4	160.8	162.8	170.5	267.4	270.5
<b>West Carv Middle</b>	<b>4th Gd:</b>	163.5	164.0	163.5	174.5	272.0	272.8
	<b>5th Gd:</b>	166.2	166.9	166.7	179.8	274.9	275.7
607	<b>3rd Gd:</b>	162.4	162.9	162.9	171.8	269.8	269.7
<b>West Lake Middle</b>	<b>4th Gd:</b>	164.9	165.1	164.9	178.4	272.9	274.1
	<b>5th Gd:</b>	167.6	168.2	168.0	183.3	277.7	277.6
608	<b>3rd Gd:</b>	159.9	161.5	160.4	166.4	266.7	265.7
<b>West Millbrook Middle</b>	<b>4th Gd:</b>	163.1	163.7	163.7	174.2	271.7	272.9
	<b>5th Gd:</b>	163.6	167.1	167.4	176.3	274.6	275.1
636	<b>3rd Gd:</b>	154.9	155.9	156.9	161.3	262.0	262.7
<b>Zebulon Middle</b>	<b>4th Gd:</b>	159.5	160.0	161.0	171.5	265.4	268.4
	<b>5th Gd:</b>	161.8	163.1	163.2	174.2	270.7	270.9