

January 2004

## Dropouts from Wake County Public Schools 2001-02

Contained in this report is a brief description of Wake County Public School's (WCPSS) dropout data for the school year 2001-02 followed by charts and tables that examine the data in detail.

The WCPSS high school (grades 9-12) dropout rate continued to decline to a four-year low of 3.5% (N=1019) in 2001-02. When compared to the largest public school systems in North Carolina, Wake had the lowest high school dropout rate, followed by Guilford (3.8%), Mecklenburg (4.8%), Forsyth (5.8%), and Durham (6.2%).

The WCPSS rate for grades 7-12 also continued its four-year decline to 2.3% (N=1039). Statewide, the 7-12 rate was 3.5%. Black students' dropout rate marginally increased from 3.9% to 4.0%, while the rate for White students declined from 1.8% to 1.5%. All other students' rate increased from 2.5% to 3.1%.

At the high school level (grades 9-12), White (2.2%), Asian (0.9%), and Multi-racial (4.1%) students' dropout rates declined for the second year in a row. However, Black (6.3%), Latino (7.7%), and Native American (12.9%) students' rates increased over the previous year's rates. It should be noted that the increase in the Native American dropout rate represented an increase of only seven dropouts compared to the 2000-01 dropout count.

The most dropouts from high schools occurred in grade 9 (n=381). Students in 10<sup>th</sup> grade comprised 258 of the high school dropouts; 217 were in 11<sup>th</sup> grade; and 163 were 12<sup>th</sup> graders. More students dropped out of the 9<sup>th</sup> grade than from the 11<sup>th</sup> and 12<sup>th</sup> grades combined.

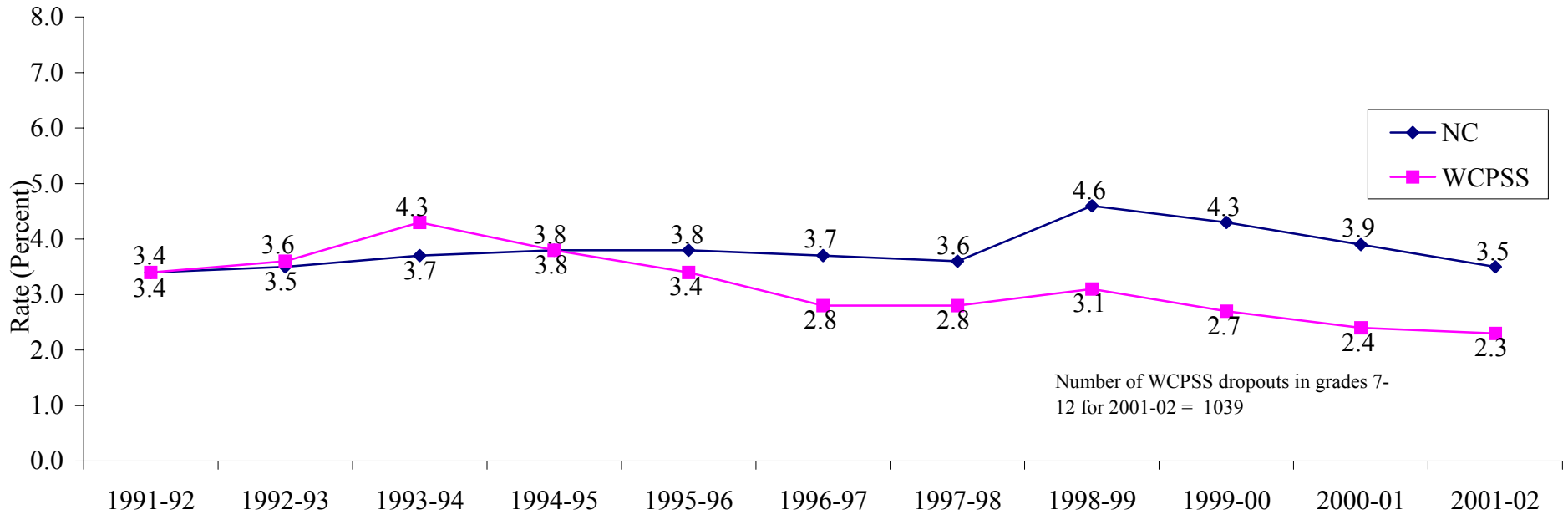
The reasons most often given for dropping out related to attendance issues (n=692), followed by academic problems (n=123), moving (n=69), and not returning after a long-term suspension (n=66). Of the entire 9-12 dropout group, more males (58.5%) than females (41.5%) dropped out, as did more Black students (46.2%) than White students (40.6%).

Any questions concerning dropouts may be directed to Kevin Gilleland (919-850-1902) or Chuck Dulaney (919-850-1903) in the Department of Evaluation and Research at Wake County Public Schools.



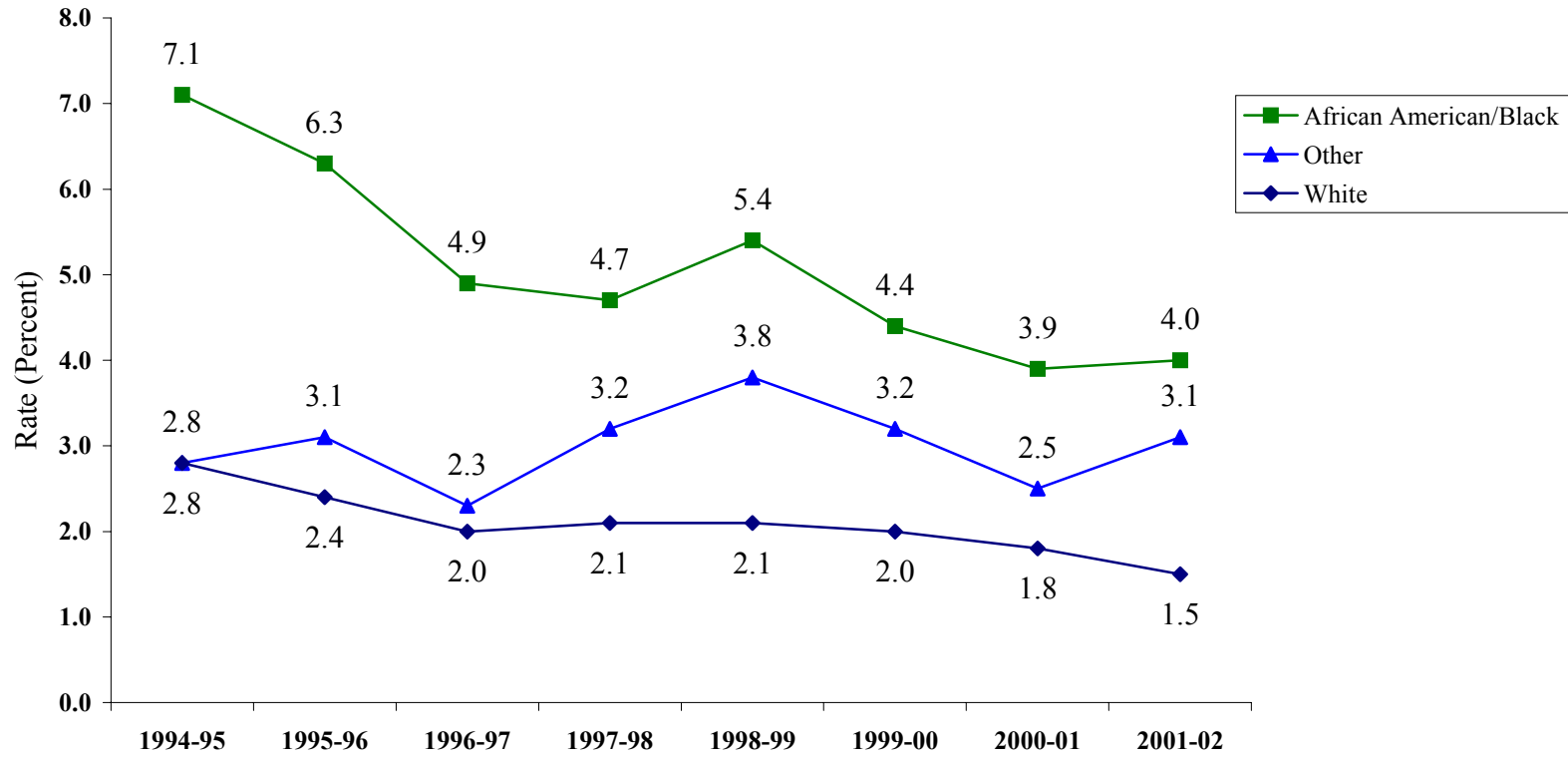
**WAKE COUNTY**  
PUBLIC SCHOOL SYSTEM

NC and WCPSS Dropout Rates  
 Grades 7-12  
 1992 to 2002



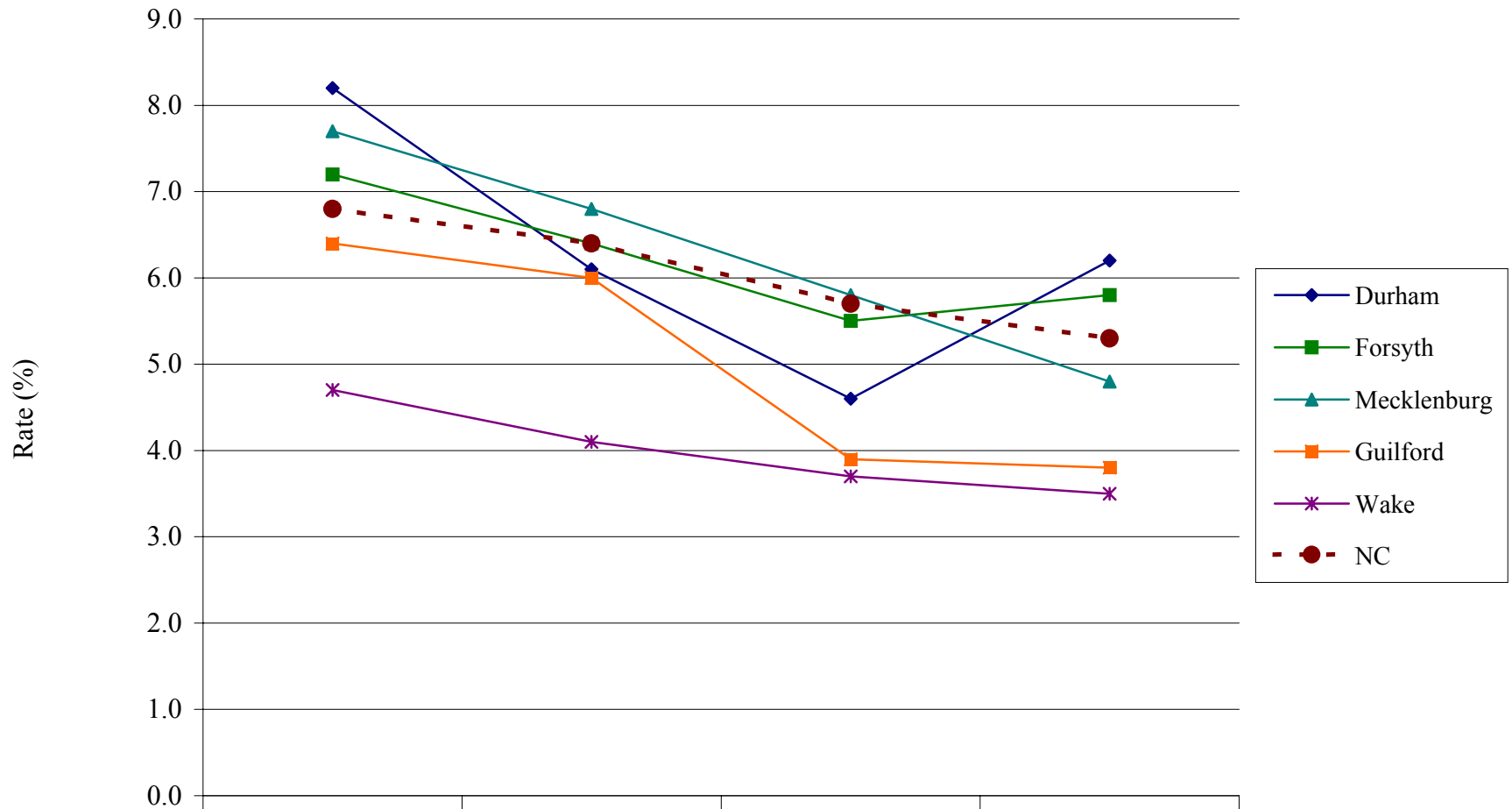
NOTES: 1991-92 was the first year in which dropouts were reported based on federal guidelines and was the first year using the SIMS Dropout Data Summary (DOP-9). Beginning in 1998-99, students transferring to community college GED programs were counted as dropouts.

WCPSS Dropout Rates  
Grades 7-12 by Ethnic Group  
1995-2002



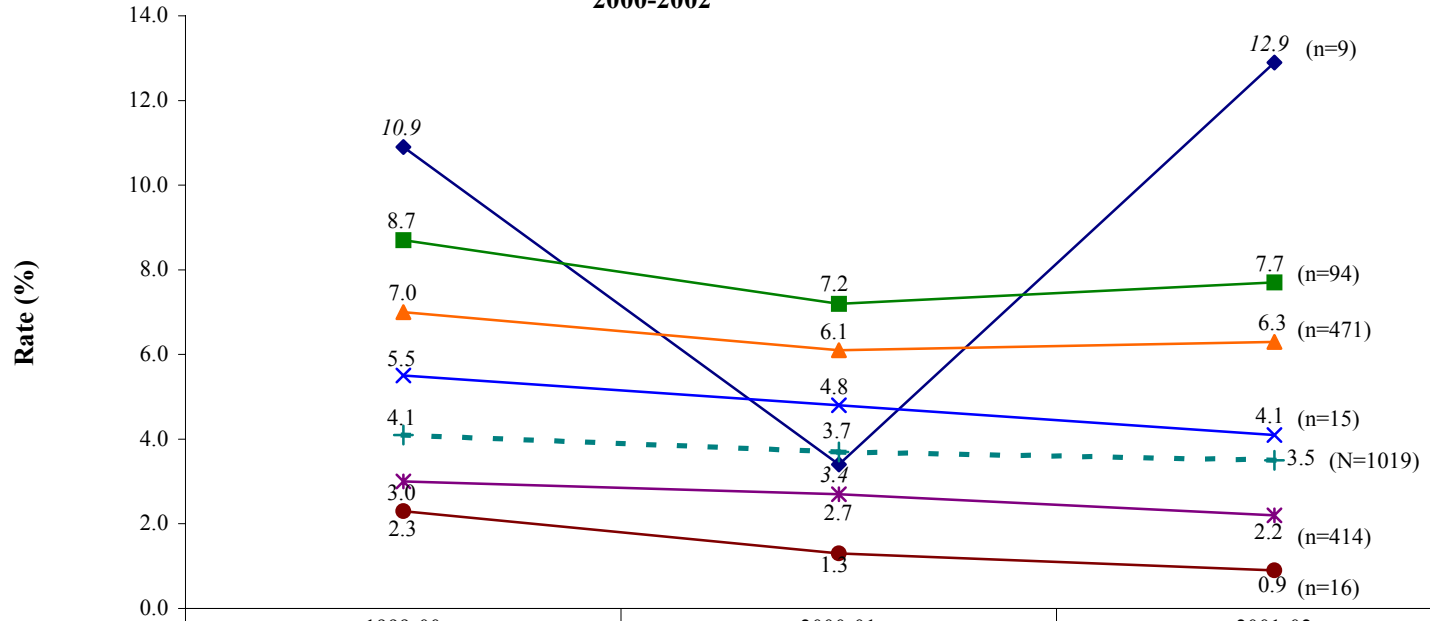
NOTE: Beginning in 1998-99, students transferring to community college GED programs were counted as dropouts.

Grades 9-12 Dropout Rates for Selected Districts and NC  
1999-2002



	1998-99	1999-00	2000-01	2001-02
Durham	8.2	6.1	4.6	6.2
Forsyth	7.2	6.4	5.5	5.8
Mecklenburg	7.7	6.8	5.8	4.8
Guilford	6.4	6	3.9	3.8
Wake	4.7	4.1	3.7	3.5
NC	6.8	6.4	5.7	5.3

**Dropout Rates by Ethnic Group  
Grades 9-12  
2000-2002**



	1999-00	2000-01	2001-02
◆ Native American	10.9	3.4	12.9
■ Hispanic/Latino	8.7	7.2	7.7
▲ African American/Black	7.0	6.1	6.3
× Multi-racial	5.5	4.8	4.1
* White	3.0	2.7	2.2
● Asian	2.3	1.3	0.9
+ WCPSS	4.1	3.7	3.5

**WCPSS High School Dropout Rate (%)**  
**By School**  
**1997-2002**

<b>High School</b>	<b>1996-97</b>	<b>1997-98</b>	<b>1998-99</b>	<b>1999-00</b>	<b>2000-01</b>	<b>2001-02</b>
Apex	3.3	4.0	4.1	2.5	2.7	2.6
Athens	5.2	4.8	2.8	4.2	2.8	2.6
Longview	17.4	29.2	21.1	23.8	13.3	16.5
Broughton	2.6	4.8	5.1	3.7	2.8	4.5
Cary	3.7	1.8	4.6	3.5	5.2	3.1
East Wake	6.8	6.5	6.0	7.1	6.5	6.3
Enloe	1.8	2.2	3.0	1.5	2.7	1.9
Fuquay-Varina	4.4	5.5	5.2	5.3	5.6	4.8
Garner	5.5	4.8	4.8	4.3	3.6	6.3
Green Hope					1.3	0.0
Leesville	2.1	1.8	2.5	2.7	2.0	2.3
Millbrook	3.8	5.8	5.5	5.4	2.5	4.1
Phillips	36.2	27.9	35.7	45.1	29.3	24.0
Sanderson	3.2	4.1	3.4	3.9	2.4	3.1
S.E. Raleigh		2.2	2.4	2.2	3.5	2.4
Wake Forest- Rolesville	4.2	3.0	7.2	6.4	8.4	2.6
Wakefield					1.3	1.7
<b>WCPSS</b>	<b>4.3</b>	<b>4.2</b>	<b>4.7</b>	<b>4.1</b>	<b>3.7</b>	<b>3.5</b>

**2001-02 High School Dropouts  
By Grade**

<b>Grade</b>				
<b>GD</b>	<b>Frequency</b>	<b>Percent</b>	<b>Cumulative Frequency</b>	<b>Cumulative Percent</b>
<b>9th</b>	381	37.39	381	37.39
<b>10th</b>	258	25.32	639	62.71
<b>11th</b>	217	21.30	856	84.00
<b>12th</b>	163	16.00	1019	100.00

**2001-02 High School Dropouts  
By Gender**

<b>Gender</b>				
<b>gender</b>	<b>Frequency</b>	<b>Percent</b>	<b>Cumulative Frequency</b>	<b>Cumulative Percent</b>
<b>Female</b>	423	41.51	423	41.51
<b>Male</b>	596	58.49	1019	100.00

**2001-02 High School Dropouts  
By Race**

<b>Race</b>				
<b>RACE</b>	<b>Frequency</b>	<b>Percent</b>	<b>Cumulative Frequency</b>	<b>Cumulative Percent</b>
<b>American Indian</b>	9	0.88	9	0.88
<b>Asian</b>	16	1.57	25	2.45
<b>Black</b>	471	46.22	496	48.68
<b>Hispanic</b>	94	9.22	590	57.90
<b>Multi-racial</b>	15	1.47	605	59.37
<b>White</b>	414	40.63	1019	100.00

**2001-02 High School Dropouts  
By Age**

Age				
AGE	Frequency	Percent	Cumulative Frequency	Cumulative Percent
14	19	1.86	19	1.86
15	112	10.99	131	12.86
16	268	26.30	399	39.16
17	293	28.75	692	67.91
18	243	23.85	935	91.76
19	75	7.36	1010	99.12
20	9	0.88	1019	100.00

**2001-02 High School Dropouts  
By Lunch**

<b>Lunch</b>	<b>Frequency</b>	<b>Percent</b>	<b>Cumulative Frequency</b>	<b>Cumulative Percent</b>
<b>Free</b>	229	22.47	229	22.47
<b>Reduced</b>	30	2.94	259	25.42
<b>Not Free or Reduced</b>	760	74.58	1019	100.00

**2001-02 High School Dropouts  
By Special Education**

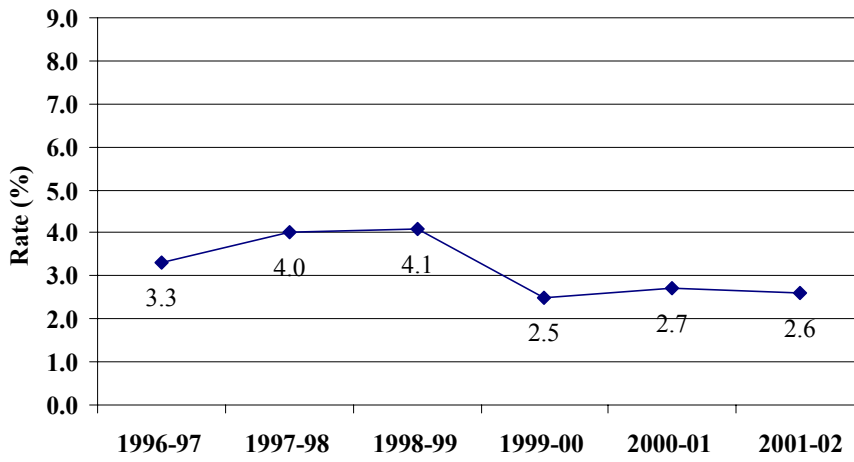
<b>SpecEd</b>	<b>Frequency</b>	<b>Percent</b>	<b>Cumulative Frequency</b>	<b>Cumulative Percent</b>
<b>AG</b>	1	0.10	1	0.10
<b>EH</b>	3	0.29	4	0.39
<b>EM</b>	1	0.10	5	0.49
<b>LD</b>	5	0.49	10	0.98
<b>OH</b>	1	0.10	11	1.08
<b>Not Spec. Ed.</b>	1008	98.92	1019	100.00

**2001-02 High School Dropouts  
By Reason for Dropping Out**

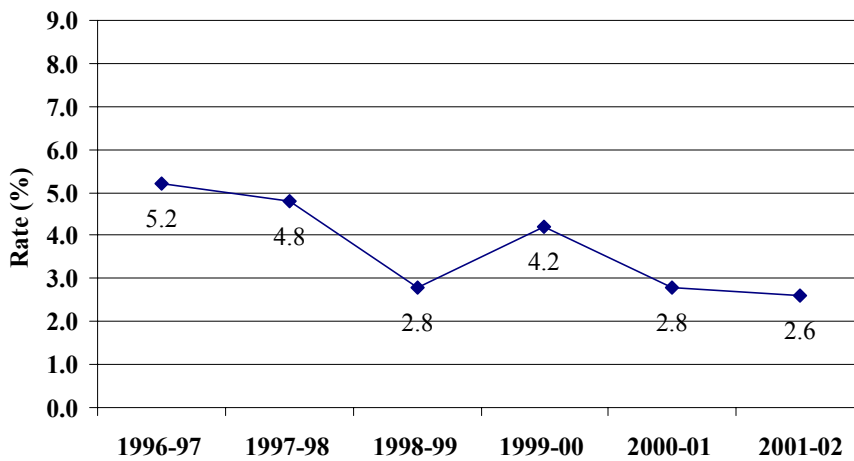
<b>Reason</b>				
<b>REASON</b>	<b>Frequency</b>	<b>Percent</b>	<b>Cumulative Frequency</b>	<b>Cumulative Percent</b>
<b>Academic Problems</b>	123	12.11	123	12.11
<b>Attendance Family</b>	64	6.30	187	18.41
<b>Attendance Personal</b>	58	5.71	245	24.11
<b>Attendance School</b>	128	12.60	373	36.71
<b>Attendance</b>	435	42.81	808	79.53
<b>Attendance Work</b>	7	0.69	815	80.22
<b>Need to Care for Children</b>	1	0.10	816	80.31
<b>Commun. Coll. Dropout from Approved Program</b>	2	0.20	818	80.51
<b>Discipline Problems</b>	8	0.79	826	81.30
<b>Health Problems</b>	3	0.30	829	81.59
<b>Incarcerated in Adult Facility</b>	2	0.20	831	81.79
<b>Long-Term Suspension</b>	66	6.50	897	88.29
<b>Move-- School Status Unknown</b>	68	6.69	965	94.98
<b>Other</b>	9	0.89	974	95.87
<b>Prenancy</b>	7	0.69	981	96.56
<b>Runaway</b>	5	0.49	986	97.05
<b>Choice of Work Over School</b>	30	2.95	1016	100.00

*Frequency Missing = 3*

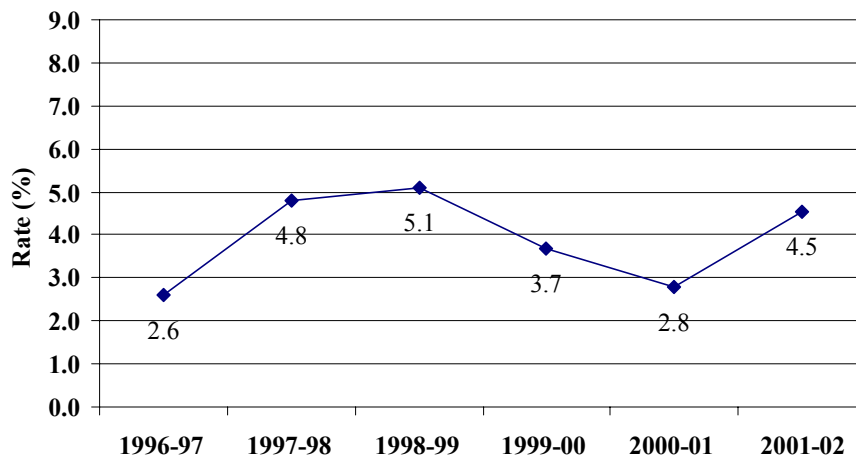
**Six-Year Dropout Trend  
Apex High**



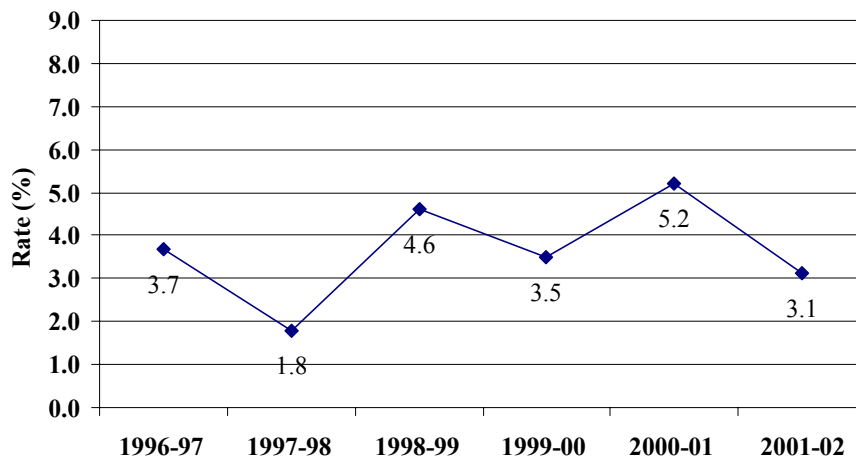
**Six-Year Dropout Trend  
Athens Drive High**



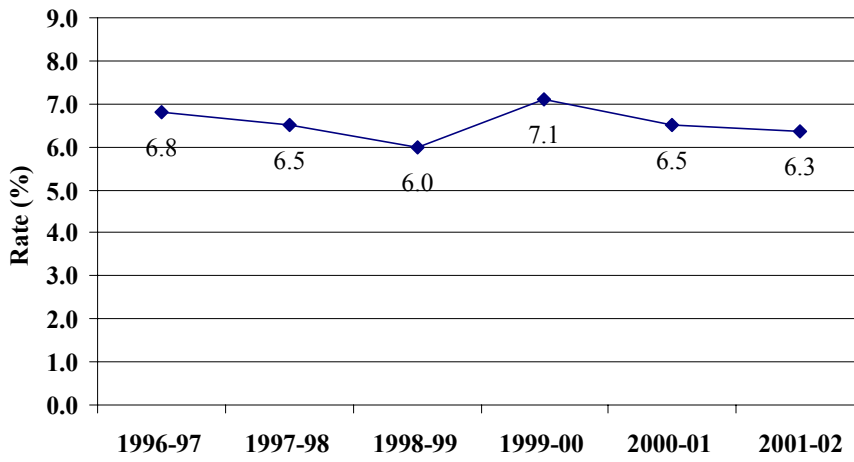
**Six-Year Dropout Trend  
Broughton High**



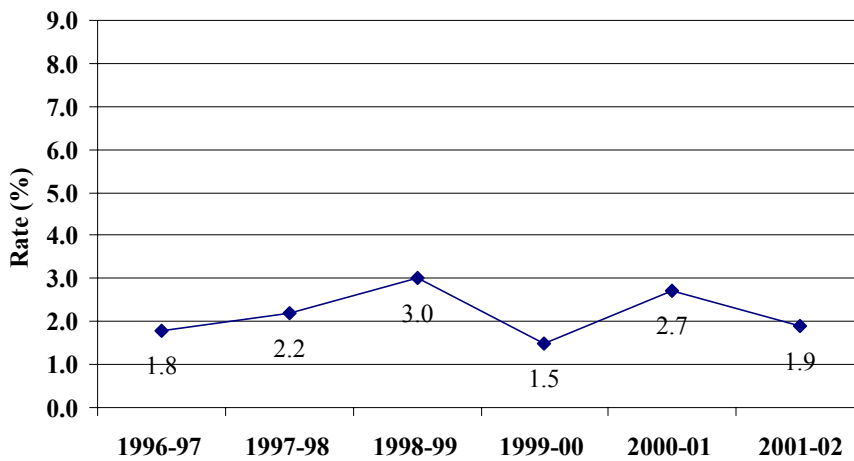
**Six-Year Dropout Trend  
Cary High**



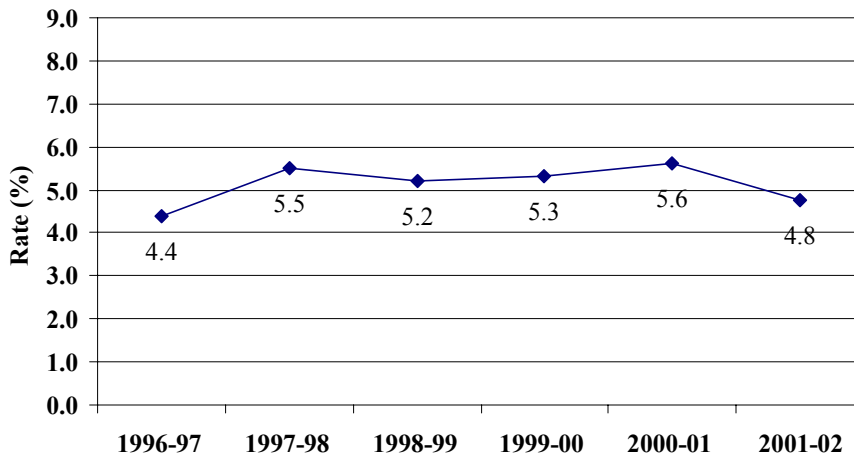
**Six-Year Dropout Trend  
East Wake High**



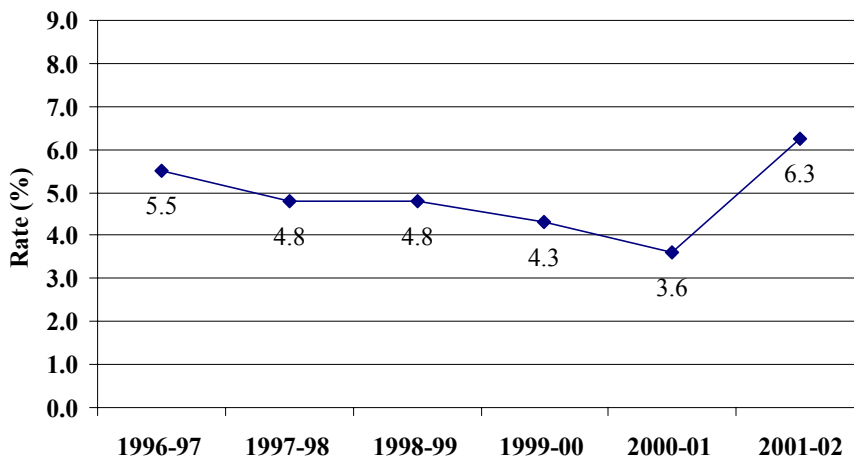
**Six-Year Dropout Trend  
Enloe High**



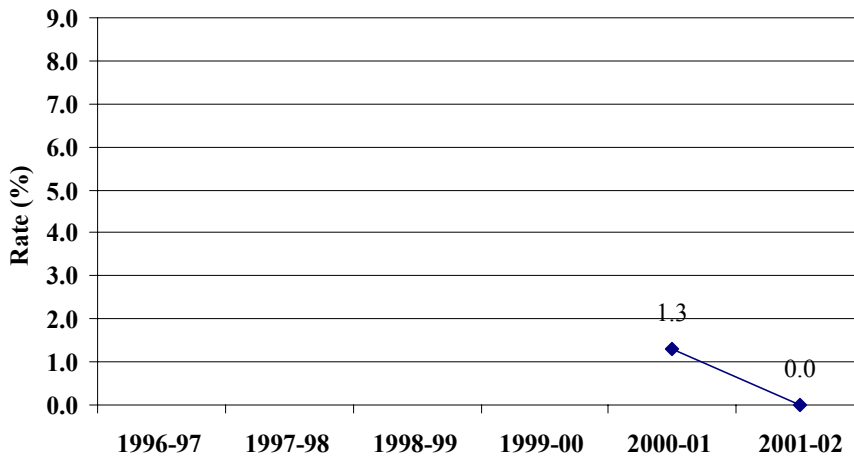
**Six-Year Dropout Trend  
Fuquay-Varina High**



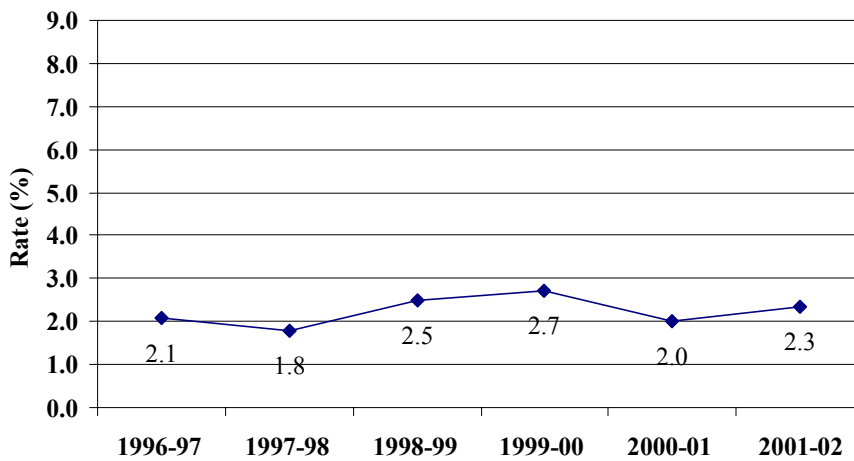
**Six-Year Dropout Trend  
Garner High**



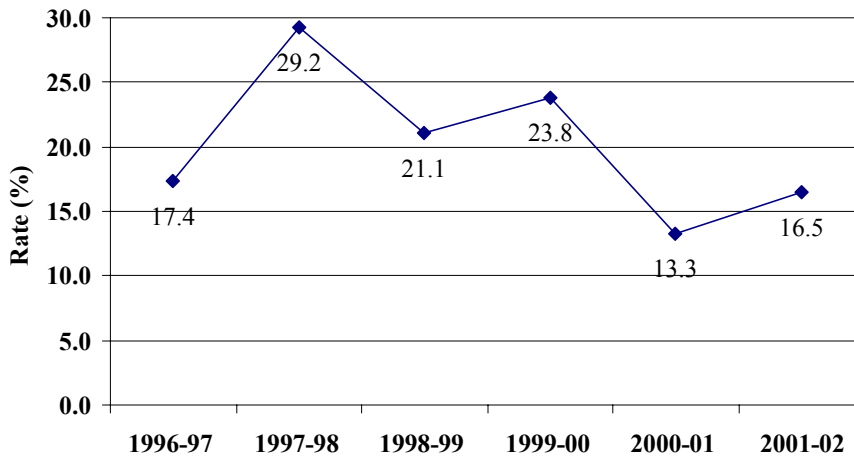
**Six-Year Dropout Trend  
Green Hope High**



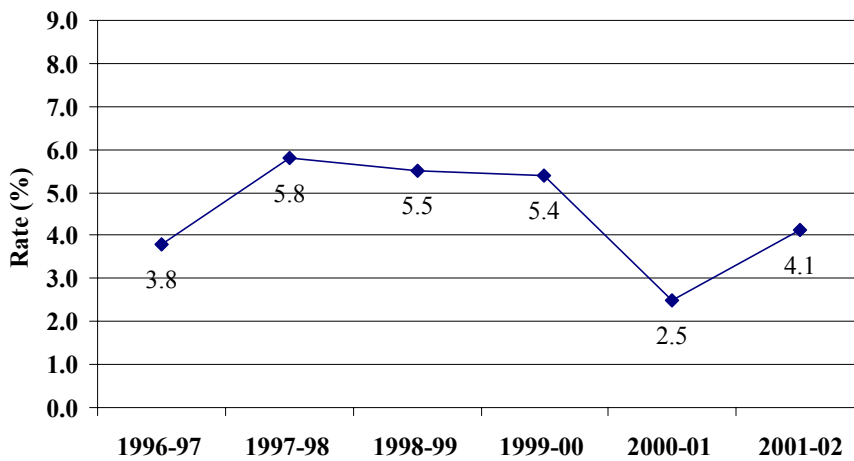
**Six-Year Dropout Trend  
Leesville Road High**



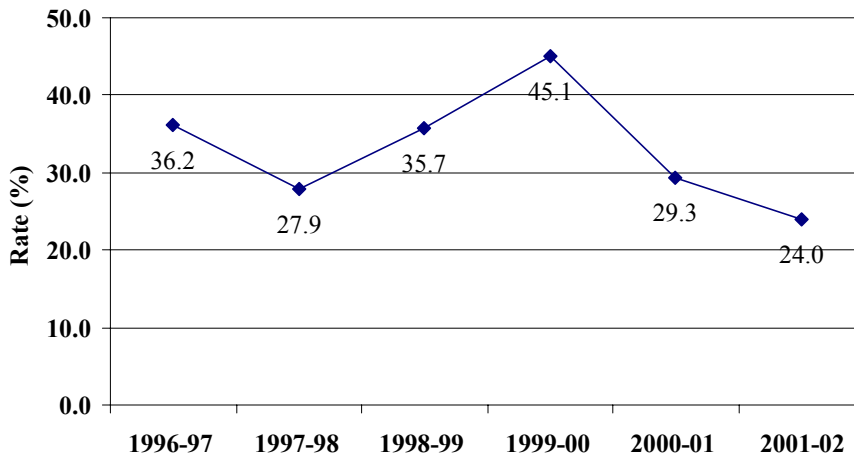
**Six-Year Dropout Trend  
Longview School High**



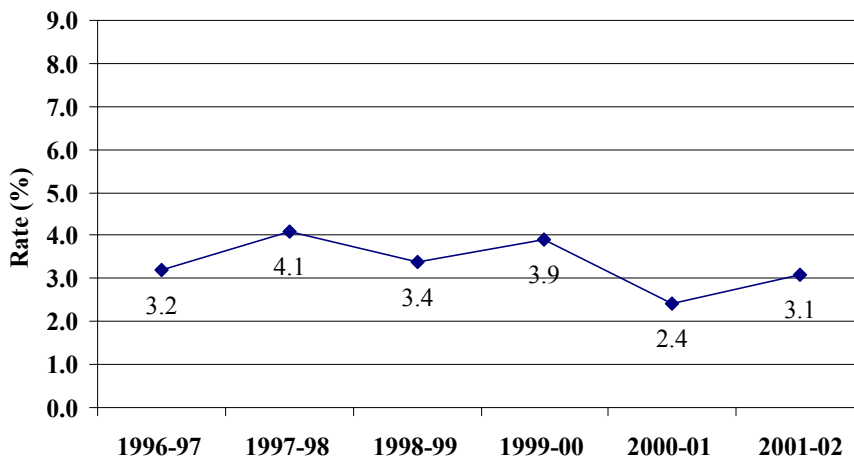
**Six-Year Dropout Trend  
Millbrook High**



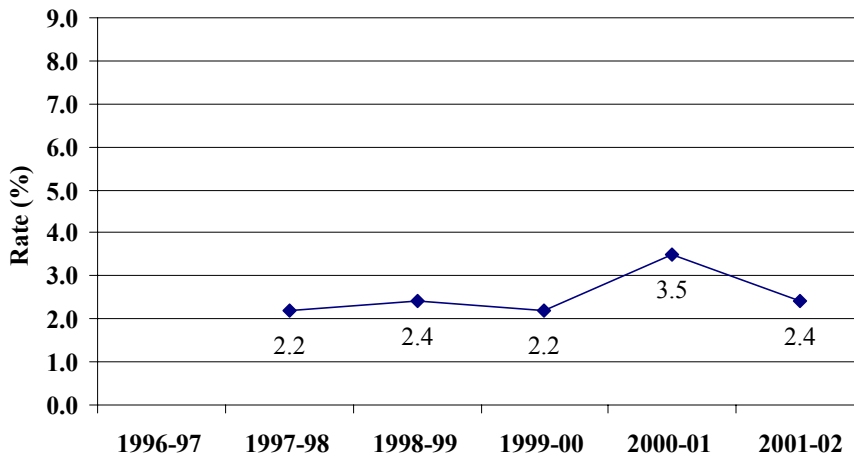
**Six-Year Dropout Trend  
Phillips High**



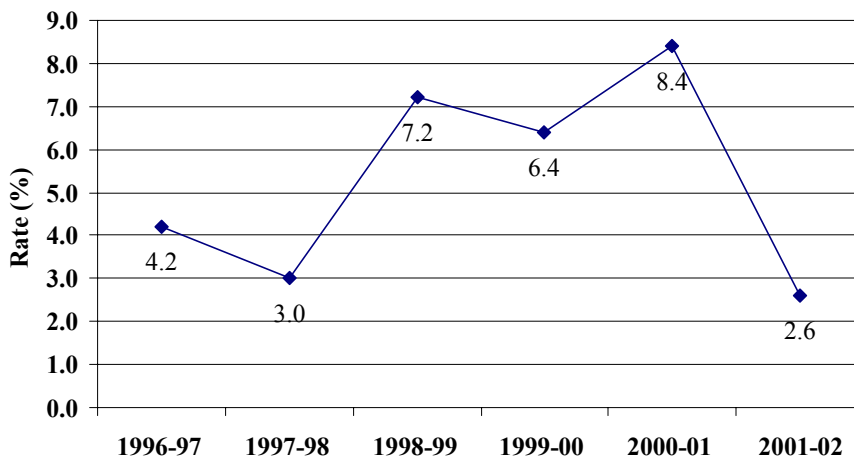
**Six-Year Dropout Trend  
Sanderson High**



**Six-Year Dropout Trend  
SE Raleigh High**



**Six-Year Dropout Trend  
Wake Forest-Rolesville High**



### Six-Year Dropout Trend Wakefield High

